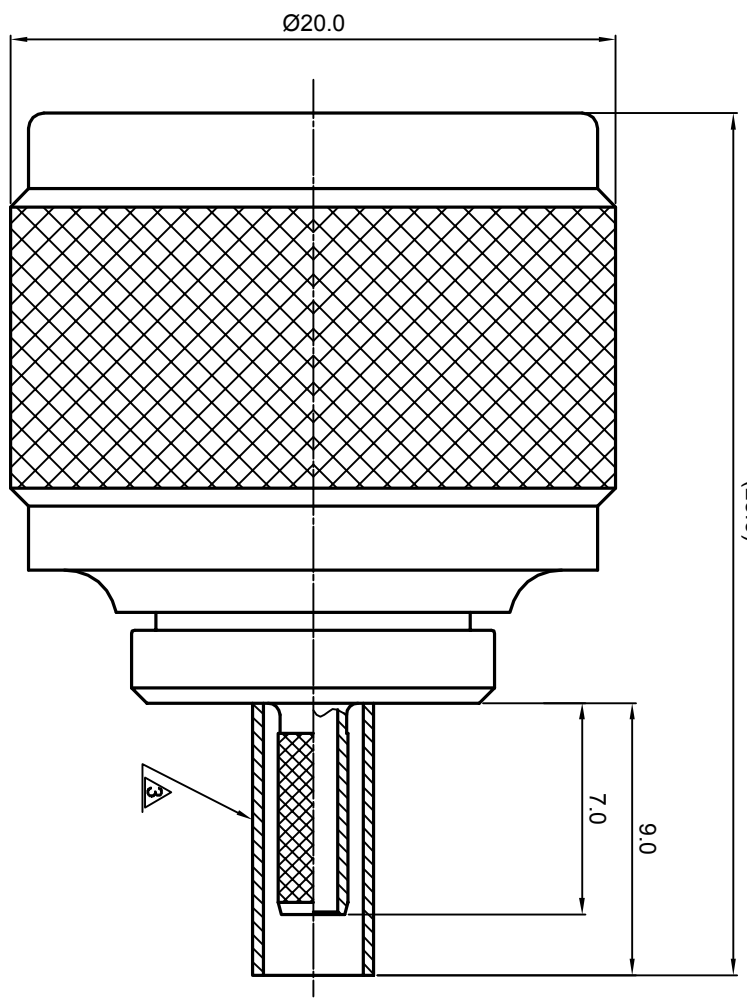


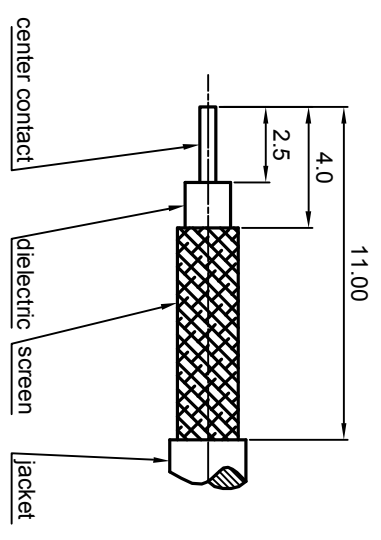
NOTES: (UNLESS OTHERWISE SPECIFIED)

1. Interface comply with IEC 169-16.
 2. Part must be packaged to avoid any damaged during transportation.
- A** After crimping dimension should be AFSW 3.25.

REV.	DESCRIPTION	APPROVED	DATE	EON
A	REL. TO PRODUCTION	Johnny	10Dec07	



RECOMMENDED CABLE STRIPPING DIMENSIONS



MATERIAL		SEE BOM FOR DETAILS		THIRD ANGLE PROJECTION		TITLE	
FINISH		SEE BOM FOR DETAILS				<h1 style="text-align: center;">Zeeteq</h1>	
TOLERANCES		Oplate X ±1 1place X ±0.1 2place XX ±0.05 Angle ±5°		GENERAL ECCENTRICITY <input checked="" type="checkbox"/> 0.06		N, PLUG, CABLE MOUNT	
Remove burrs and sharp edges				DRAWN BY Danny 17Oct07 CHECKED BY Collin 11Dec07 APPROVED BY Johnny 11Dec07		DWG NO. 5039.N.PRC.07.133	
SURFACE		VOLUME		SCALE 4:1		DO NOT SCALE DRAWING	
Plating part to be touched by gloves Dimension apply before plating XXX - measuring point for plating				SIZE A4		SHEET 1 of 1	
NOTICE: Those drawings and specifications are the property of ZEETEQ CORPORATION and used only for the specify purpose authorised by ZEETEQ				REV. A			