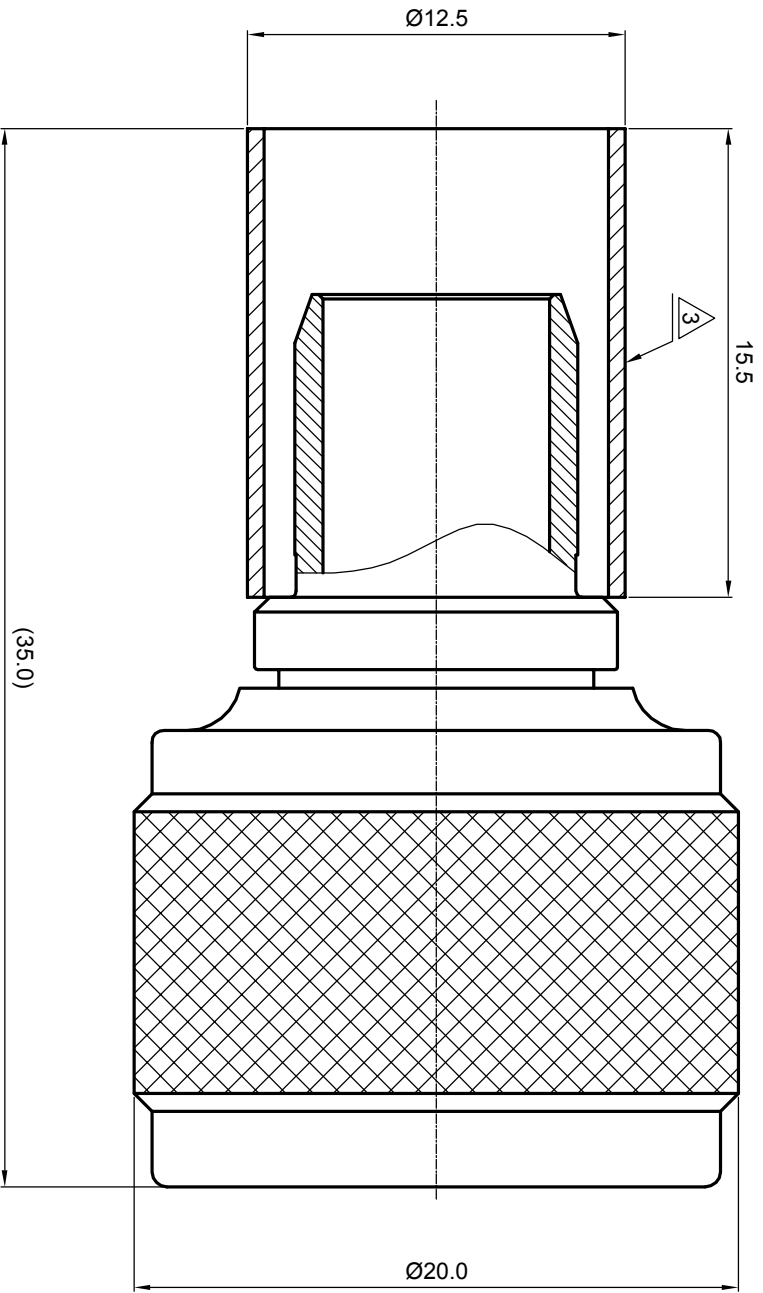


NOTES: (UNLESS OTHERWISE SPECIFIED)

1. Interface comply with IEC 169-16.
2. Part must be packaged to avoid any damaged during transportation.
3. After crimping dimension should be AF/SW 10.9



REV.	DESCRIPTION	APPROVED	DATE	EON
A	REL TO PRODUCTION	Johnny	22Apr08	

MATERIAL		SEE BOM OF DETAILS		TOLERANCES		THIRD ANGLE PROJECTION	
SEE BOM OF DETAILS		SEE BOM OF DETAILS		Oplace X ±1 1place .X ±0.1 2place .XX ±0.05 Angle ±5°			
FINISH		SEE BOM OF DETAILS		Remove burrs and sharp edges		GENERAL ECCENTRICITY <input checked="" type="checkbox"/> 0,06	
Plating part to be touched by gloves						NAME DATE	
Dimension apply before plating						DRAWN BY Colin 26Nov07	
XXX - measuring point for plating						CHECKED BY	
SURFACE		VOLUME		NOTICE: Those drawings and specifications are the property of ZEETEQ CORPORATION and used only for the specify purpose authorised by ZEETEQ.		APPROVED BY	

TITLE		N, plug, cable		SCALE		DO NOT SCALE DRAWING		SIZE		SHEET	
Zee-teq		5043.N.PSC.11.133		4:1		A4		A4		1 of 1	
DWG NO.		5043.N.PSC.11.133		REV.		A					

