

1

2

3

4

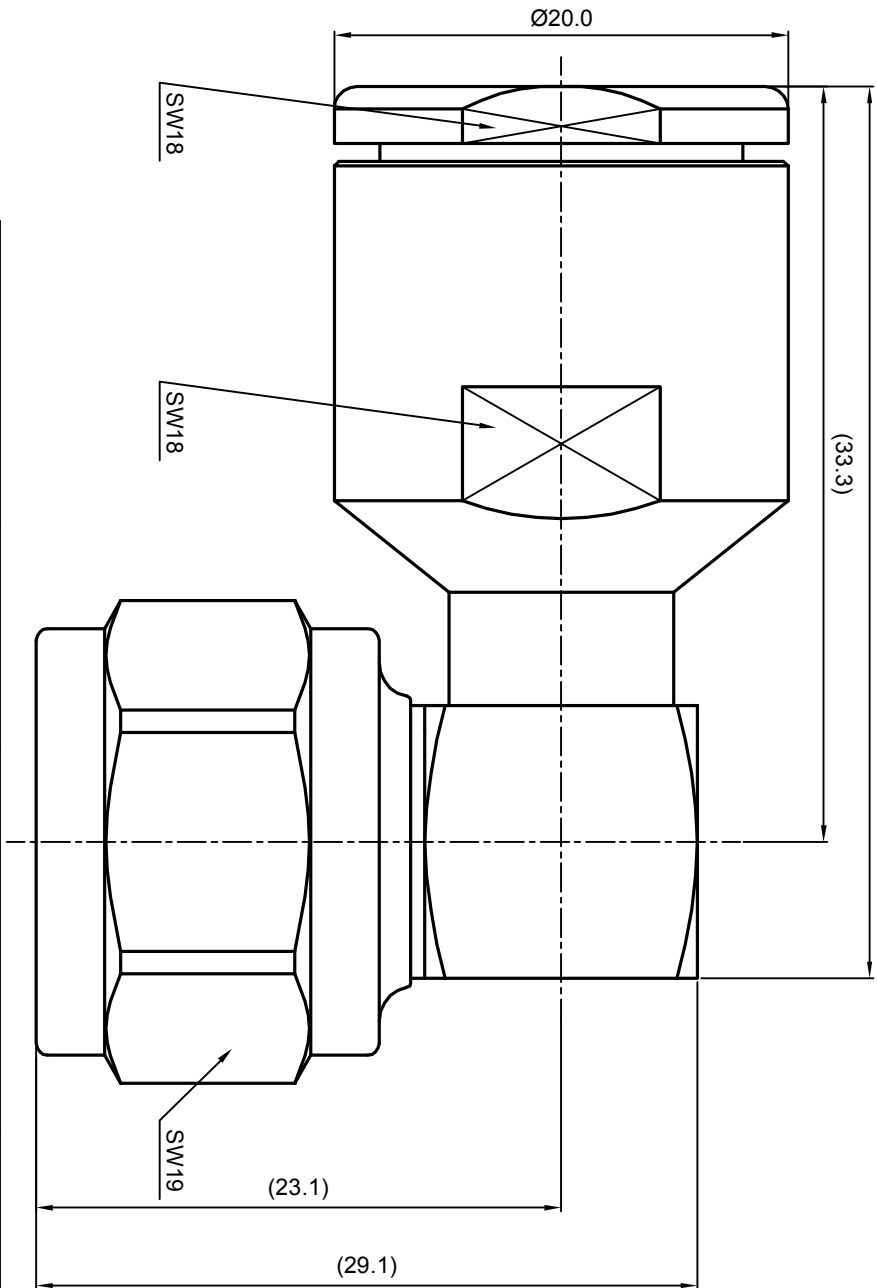
5

6

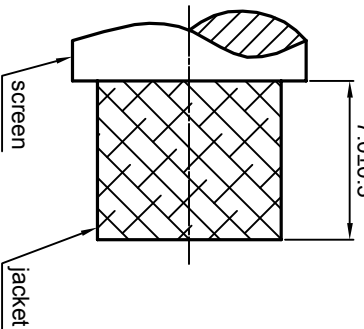
NOTES: (UNLESS OTHERWISE SPECIFIED)


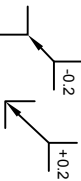
- 1. The interface comply with IEC169-16
- 2. Part must be packaged to avoid any damaged during transportation

REV.	DESCRIPTION	APPROVED	DATE	EON



RECOMMENDED CABLE STRIPPING DIMENSIONS



MATERIAL SEE BOM FOR DETAILS		TOLERANCES Oplace X ± 1 1place X ± 0.1 2place XX ± 0.05 Angle $\pm 5^\circ$		THIRD ANGLE PROJECTION 		TITLE N, PLUG, CABLE MOUNT	
FINISH SEE BOM FOR DETAILS		Remove burrs and sharp edges 		GENERAL ECCENTRICITY <input checked="" type="checkbox"/> 0.06		DWG. NO. 5190.N.PRC.11.133	
Plating part to be touched by gloves		DRAWN BY Danny.D		NAME DATE		REV. S1	
Dimension apply before plating		CHECKED BY		APPROVED BY		SCALE 3:1	
XXX - measuring point for plating		SURFACE		VOLUME		DO NOT SCALE DRAWING	
						SIZE A4	
						SHEET 1 of 1	



D

C

B

A

1

2

3

4

5

6

D

C

B

A