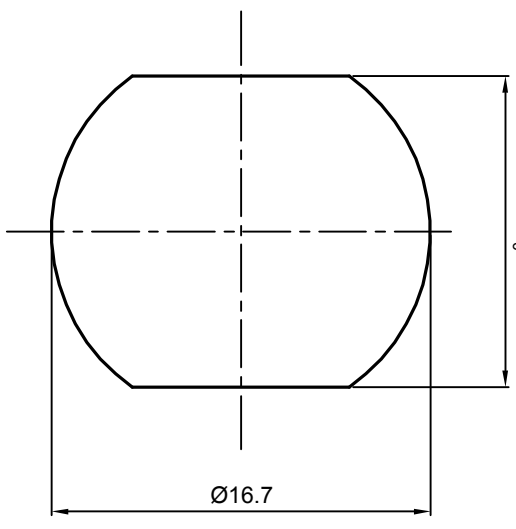


NOTES: (UNLESS OTHERWISE SPECIFIED)

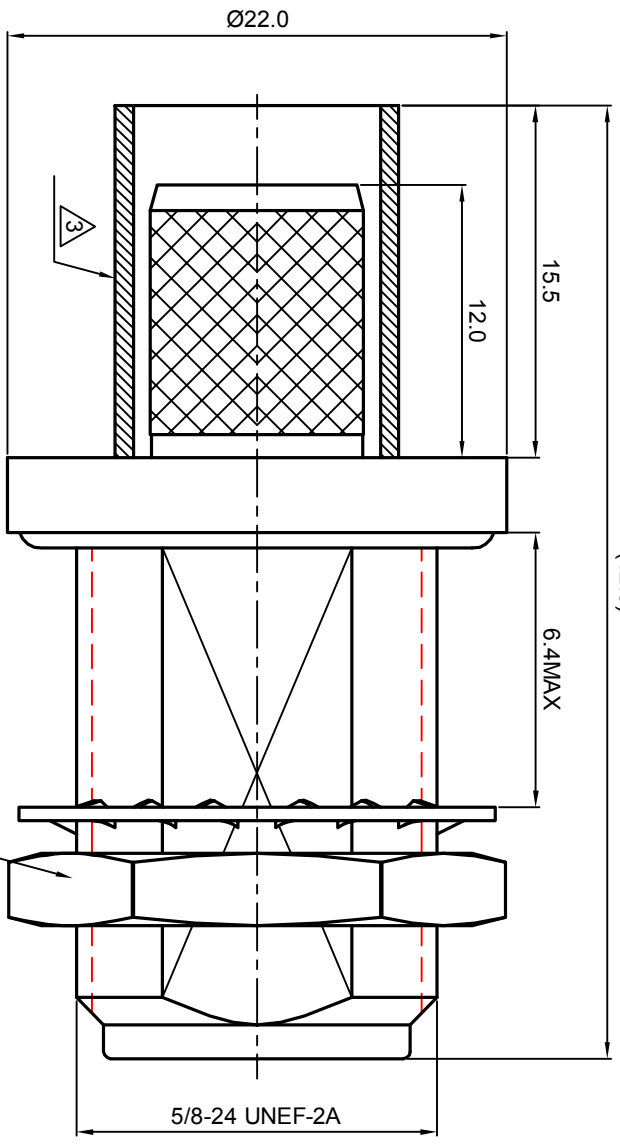
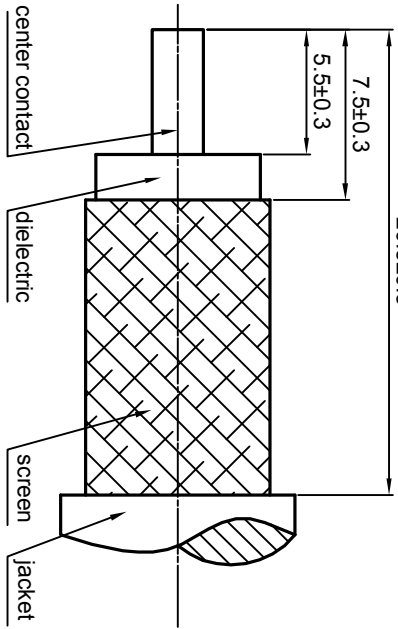
1. The interface comply with IEC169-16
2. Part must be packaged to avoid any damaged during transportation
3. After crimping dimension should be AF/SW 10.9.

Recommended
Panel cut-out

$$13.7^{+0.10}_0$$



RECOMMENDED CABLE
STRIPPING DIMENSIONS



(42.0)

REV.	DESCRIPTION	APPROVED	DATE	EON
A	REL. TO PRODUCTION	Johnny	23Jan08	

MATERIAL
**SEE BOM FOR
DETAILS**

TOLERANCES

Opface	X ±1
1place	X ±0.1
2place	XX ±0.05
Angle	±5°

THIRD ANGLE PROJECTION

GENERAL ECCENTRICITY	$\sqrt{0.06}$
DRAWN BY	Danny
CHECKED BY	Colin
APPROVED BY	Johnny
DATE	22OCT07
DATE	23Jan08
DATE	23Jan08

TITLE
N, JACK, CABLE MOUNT

Zeeteq

FINISH
**SEE BOM FOR
DETAILS**

Remove burrs and
sharp edges

Remove burrs and sharp edges

-0.2
+0.2

DWG NO.
5063.N.JSC.11.133

Plating part to be touched by gloves
Dimension apply before plating
XXX - measuring point for plating

Remove burrs and sharp edges

Remove burrs and sharp edges

REVISIONS
A

SURFACE

Remove burrs and sharp edges

Remove burrs and sharp edges

SCALE
3:1

DO NOT SCALE DRAWING

SIZE
A4

SHEET
1 of 1

1 2 3 4 5 6

