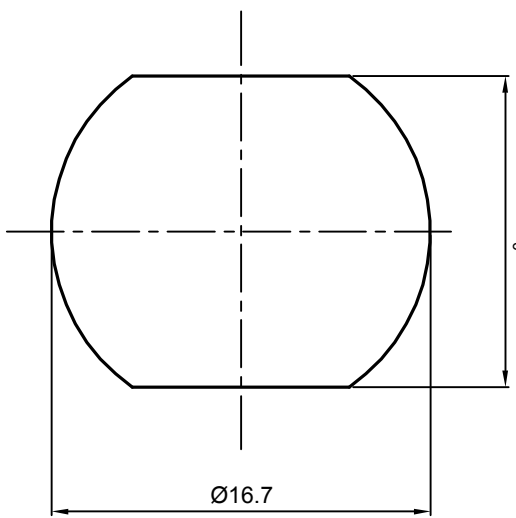


NOTES: (UNLESS OTHERWISE SPECIFIED)

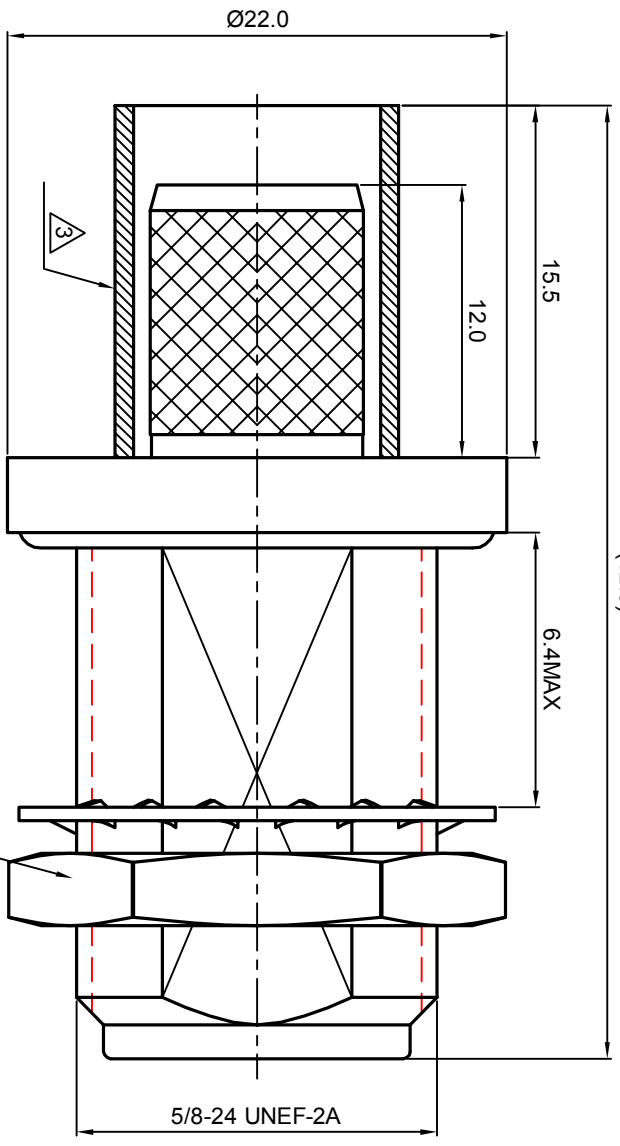
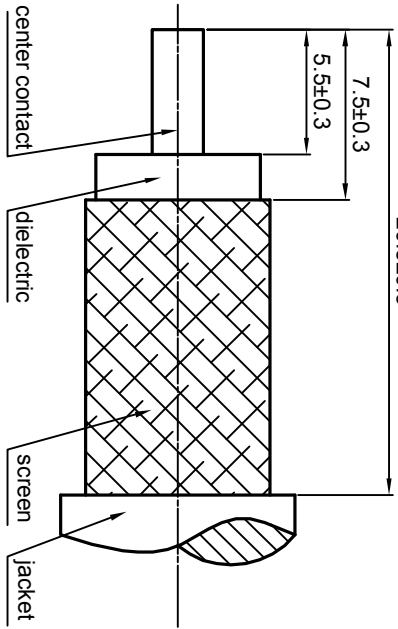
1. The interface comply with IEC169-16
 2. Part must be packaged to avoid any damaged during transportation
- ⚠ After crimping dimension should be AF/SW 10.9.

Recommended
Panel cut-out

$$13.7^{+0.10}_0$$



RECOMMENDED CABLE
STRIPPING DIMENSIONS



REV.	DESCRIPTION	APPROVED	DATE	EON
A	REL. TO PRODUCTION	Johnny	23Jan08	

MATERIAL		SEE BOM FOR DETAILS		TOLERANCES		THIRD ANGLE PROJECTION		TITLE	
FINISH		SEE BOM FOR DETAILS		Opface X ±1 1place X ±0.1 2place XX ±0.05 Angle ±5°				N, JACK, CABLE MOUNT Zee-teq	
Plating part to be touched by gloves				Remove burrs and sharp edges		DRAWN BY Danny 22OCT07 CHECKED BY Collin 23Jan08 APPROVED BY Johnny 23Jan08		DWG. NO. 5064.N.JSC.12.133 REV. A	
Dimension apply before plating						GENERAL ECCENTRICITY $\sqrt{0.06}$		SCALE 3:1 DO NOT SCALE DRAWING SIZE A4 SHEET 1 of 1	
XXX - measuring point for plating				NOTICE: Those drawings and specifications are the property of ZEEITEQ CORPORATION and used only for the specify purpose authorised by ZEEITEQ					
SURFACE		VOLUME							

