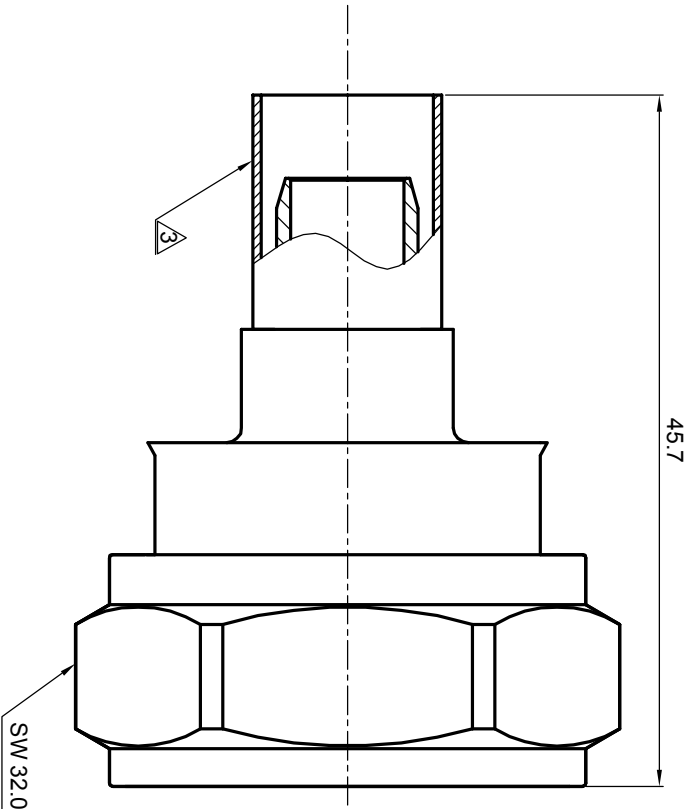
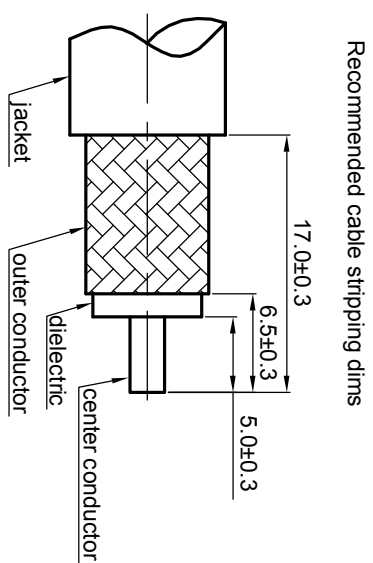


NOTES: (UNLESS OTHERWISE SPECIFIED)

1. Interface comply with IEC 169-4.
2. Part must be packaged to avoid any damaged during transportation.
3. After crimping dimension should be AF/SW 10.9.

REV.	DESCRIPTION	APPROVED	DATE	EEN
A	REL.TO PRODUCTION	Johnny	21 Jul08	EEN_08_034



MATERIAL		See bom		THIRD ANGLE PROJECTION		TITLE	
FINISH		See bom				Zee-teq	
TOLERANCES		0place X ±1 1place .X ±0.1 2place .XX ±0.05 Angle ±5°		GENERAL ECCENTRICITY <input checked="" type="checkbox"/> 100%		DWG. NO. 5070.716.PSC.11.233	
Remove burrs and sharp edges				DRAWN BY: Colijn DATE: 30Nov07		REV. A	
Plating part to be touched by gloves				CHECKED BY:		SCALE 2:1 DO NOT SCALE DRAWING SIZE A4 SHEET 1 of 1	
Dimension apply before plating				APPROVED BY:			
XXX - measuring point for plating							
SURFACE		VOLUME					

NOTICE: Those drawings and specifications are the property of ZEEETEQ CORPORATION and used only for the specify purpose authorised by ZEEETEQ