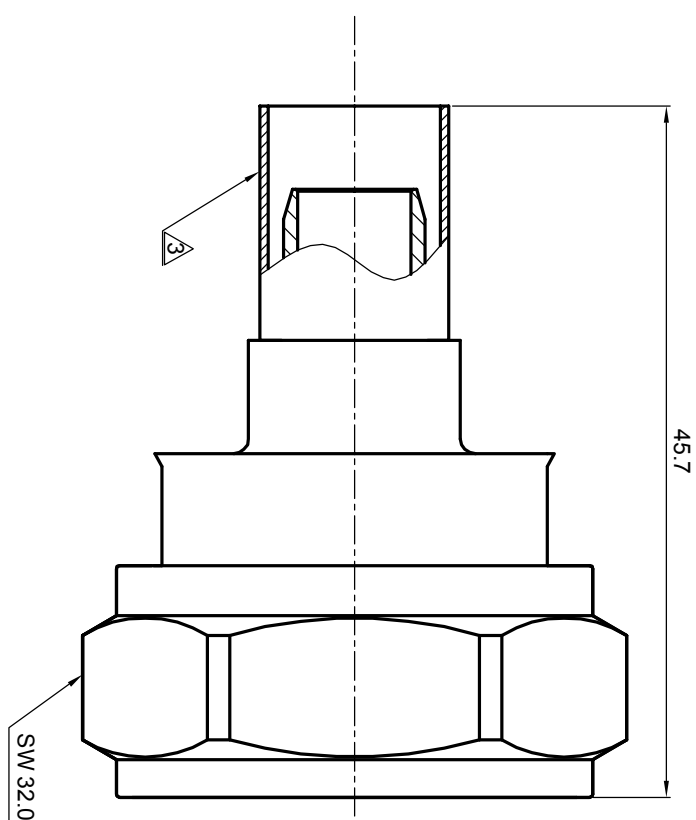
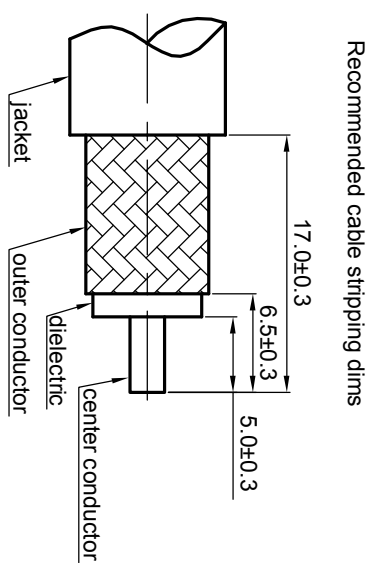


NOTES: (UNLESS OTHERWISE SPECIFIED)

1. Interface comply with IEC 169-4.
2. Part must be packaged to avoid any damaged during transportation.
3. After crimping dimension should be AF/SW 10.9.

REV.	DESCRIPTION	APPROVED	DATE	ECN



MATERIAL		See bom		THIRD ANGLE PROJECTION				TITLE		716, PLUG, CABLE	
FINISH		See bom		TOLERANCES 0place X ±1 1place X ±0.1 2place .XX ±0.05 Angle ±5°		GENERAL ECCENTRICITY <input checked="" type="checkbox"/> 100%		DWG. NO.		5071.716.PSC.12.233	
Remove burrs and sharp edges				DRAWN BY Colin 30NOV07		NAME DATE		SCALE 2:1		DO NOT SCALE DRAWING	
Plating part to be touched by gloves		Dimension apply before plating		CHECKED BY		APPROVED BY		SIZE A4		SHEET 1 of 1	
XXX - measuring point for plating		SURFACE		NOTICE: Those drawings and specifications are the property of ZEETEQ CORPORATION and used only for the specify purpose authorised by ZEETEQ		DATE		REV.		S1	
VOLUME											

Zeeteq

1 2 3 4 5 6

A B C D