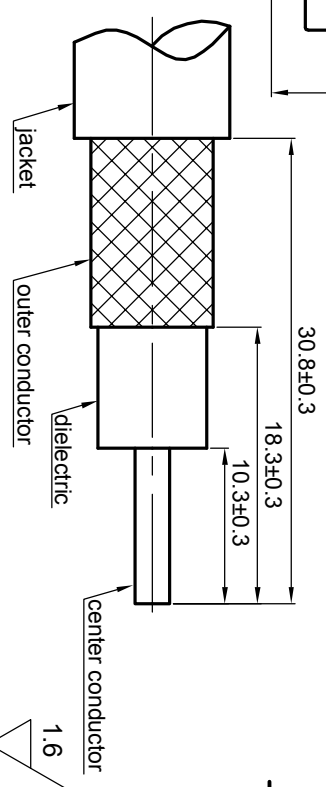
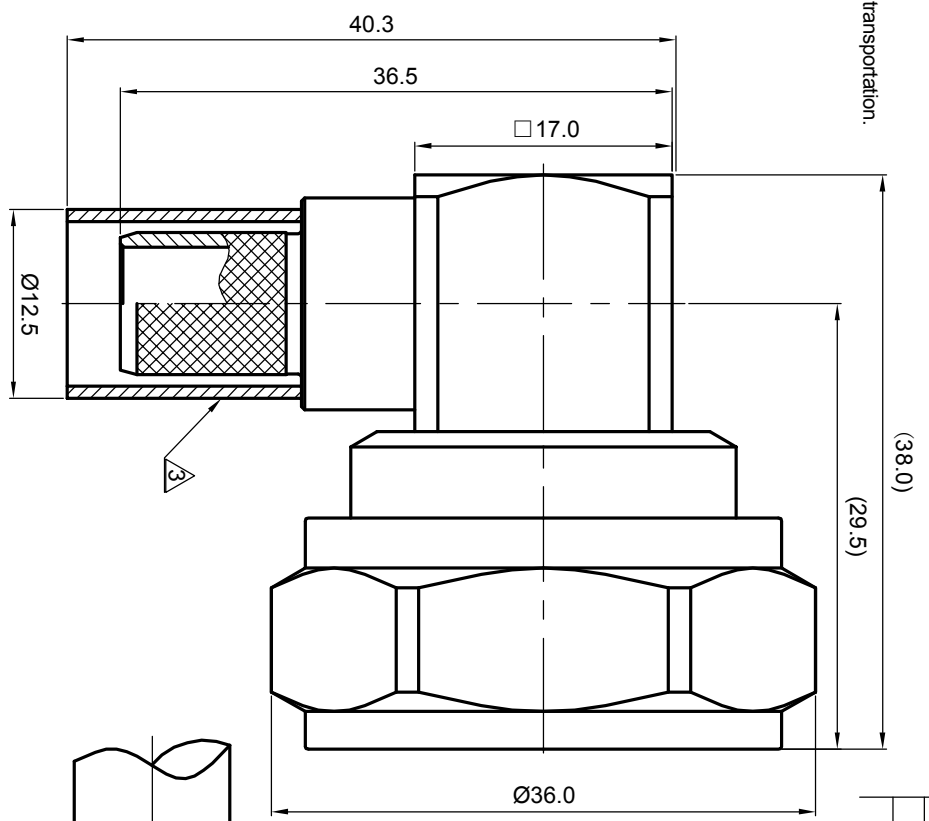


**NOTES: (UNLESS OTHERWISE SPECIFIED)**

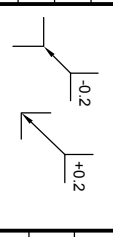
1. Interface comply with IEC 169-4.
  2. Part must be packaged to avoid any damaged during transportation.
- ⚠ After crimping dimension should be AF/SW 10.9.



Recommended cable stripping dims

MATERIAL	
SEE BOM OF DETAILS	
FINISH	
SEE BOM OF DETAILS	
Plating part to be touched by gloves	
Dimension apply before plating	
XXX - measuring point for plating	
SURFACE	VOLUME

TOLERANCES	
1place	X ±1
2place	X ±0.1
Angle	XX ±0.05
Remove burrs and sharp edges	±5°



THIRD ANGLE PROJECTION	
GENERAL ECCENTRICITY	
NAME	
DRAWN BY	DATE
CHECKED BY	
APPROVED BY	

TITLE	
716, plug, cable	
DWG NO.	
5073.716.PRC.11.233	
SCALE	SIZE
2:1	A4
DO NOT SCALE DRAWING	SHEET
	1 of 1
REV.	
S1	

REV.	DESCRIPTION	APPROVED	DATE	ECN