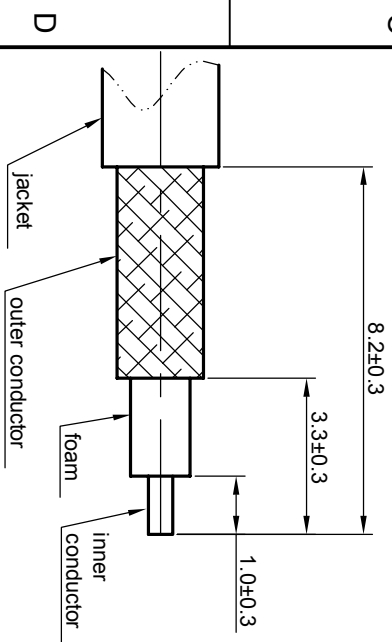
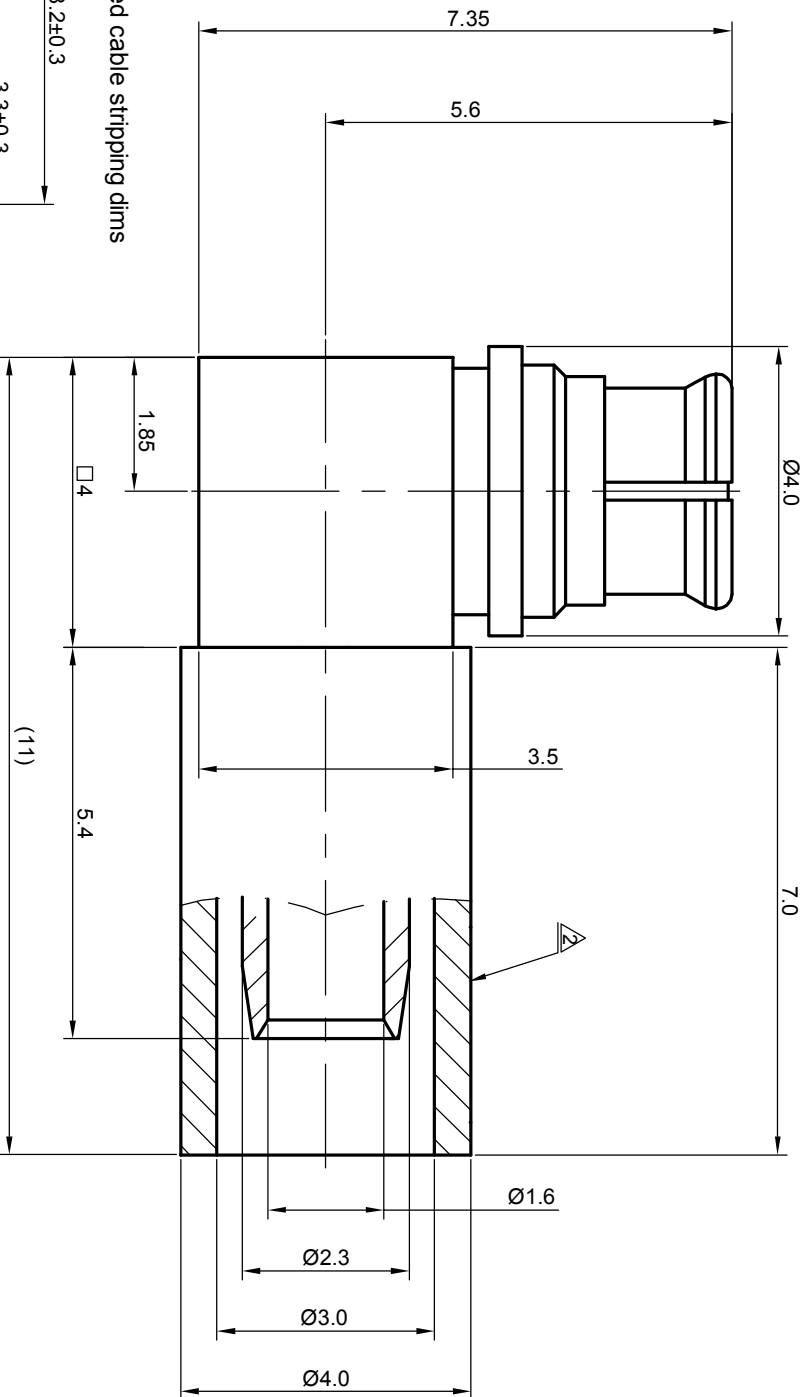


NOTES: (UNLESS OTHERWISE SPECIFIED)

1. Interface according to MIL-STD-348A.
2. After crimping dimension should be AF/SW 3.25



MATERIAL SEE BOM		TOLERANCES		THIRD ANGLE PROJECTION	
FINISH SEE BOM		Oplate X ±1 1place X ±0.1 2place XX ±0.05 Angle ±5°			
Plating part to be touched by gloves		Remove burrs and sharp edges		GENERAL ECCENTRICITY $\sqrt{0.06}$	
Dimension apply before plating				DRAWN BY Collin DATE 12Nov07	
XXX - measuring point for plating		APPROVED BY		CHECKED BY NAME DATE	
SURFACE		VOLUME		DWG. NO. 5109.SMP.JRC.06.111	

			TITLE SMP, JACK, CABLE		
SCALE 1:0.1			DO NOT SCALE DRAWING		
SIZE A4			SHEET 1 of 1		
REV. S1			DATE 12Nov07		

REV.	DESCRIPTION	APPROVED	DATE	ECN