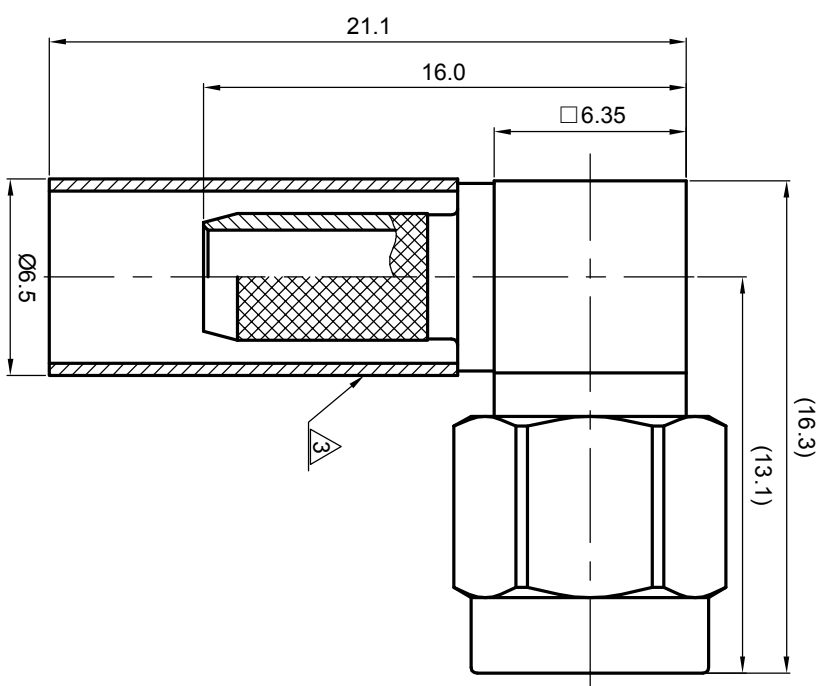
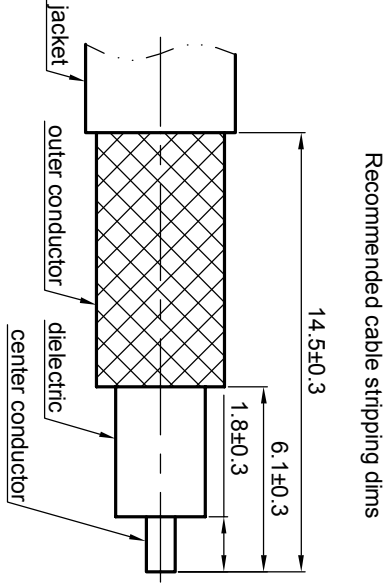


**NOTES: (UNLESS OTHERWISE SPECIFIED)**

- Interface comply with IEC 169-15.
- Part must be packaged to avoid any damaged during transportation.

After crimping dimension should be AF/SW 5.41.



REV.	DESCRIPTION	APPROVED	DATE	EGN
A	REL. TO PRODUCTION	Johnny	21 Nov 07	

MATERIAL		SEE BOM OF DETAILS		TOLERANCES		THIRD ANGLE PROJECTION	
SEE BOM OF DETAILS		SEE BOM OF DETAILS		Oplice X ±1 1place X ±0.1 2place .XX ±0.05 Angle ±5°			
FINISH		SEE BOM OF DETAILS		Remove burrs and sharp edges -0.2 -0.2		GENERAL ECCENTRICITY  0.06	
Plating part to be touched by gloves				DRAWN BY Billy		NAME DATE	
Dimension apply before plating				CHECKED BY Joy		11 Oct 07	
XXX - measuring point for plating				APPROVED BY Johnny		21 Nov 07	
SURFACE		VOLUME		NOTICE: Those drawings and specifications are the property of ZEETEQ CORPORATION and used only for the specify purpose authorised by ZEETEQ.			

**Zee teq**

TITLE: SMA, plug, cable

DWG NO. 5014.SMA.PRC.09.111

SCALE 4:1

DO NOT SCALE DRAWING

SIZE A4

SHEET 1 OF 1

REV. A