

1

2

3

4

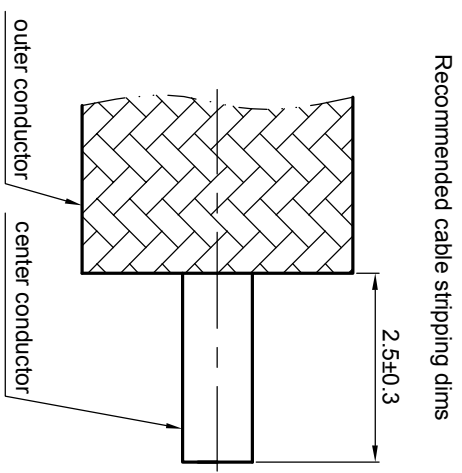
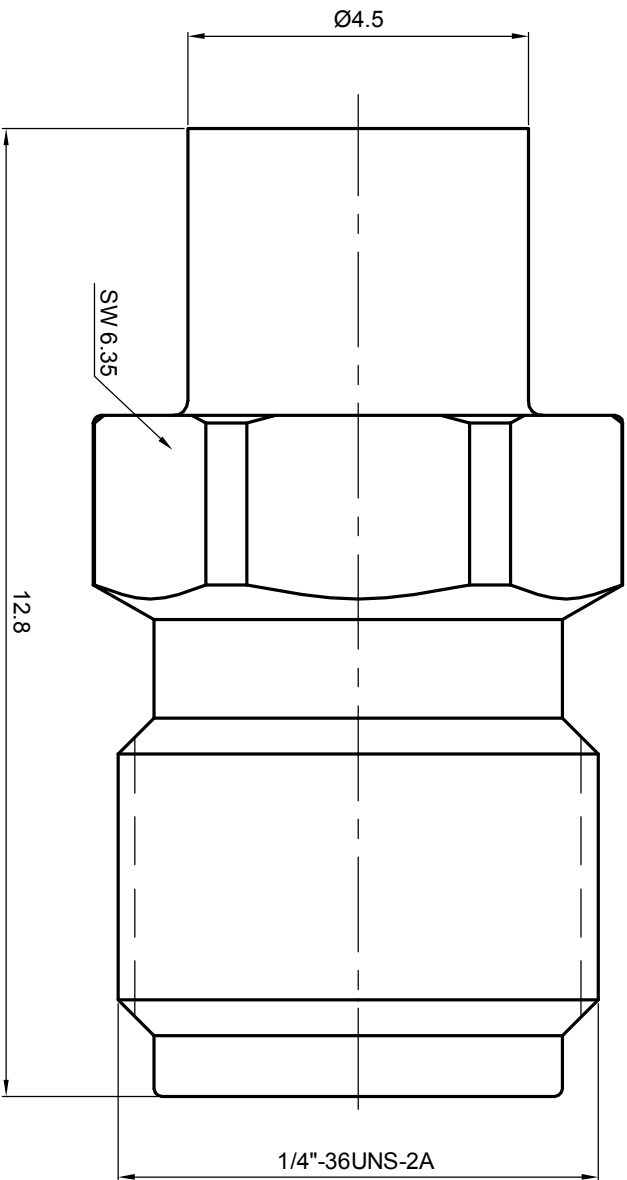
5

6

**NOTES: (UNLESS OTHERWISE SPECIFIED)**

- 1. Interface comply with IEC 169-15.
- 2. Part must be packaged to avoid any damaged during transportation.

REV.	DESCRIPTION	APPROVED	DATE	ECN



Recommended cable stripping dims

MATERIAL		TOLERANCES		THIRD ANGLE PROJECTION		TITLE	
SEE BOM OF DETAILS		Opface X ±1 1place X ±0.1 2place .XX ±0.05 Angle ±5°		 GENERAL ECCENTRICITY <input checked="" type="checkbox"/> 0.06		<b>Zee-teq</b> SMA, Jack, cable	
FINISH		Remove burrs and sharp edges		DRAWN BY		DWG NO.	
SEE BOM OF DETAILS				NAME		5159.SMA.JSC.03.110	
Plating part to be touched by gloves		-0.2		DATE		REV.	
SURFACE		-0.2		11 Oct 07		S1	
VOLUME		APPROVED BY		CHECKED BY		SCALE	
						5:1	
NOTICE: Those drawings and specifications are the property of ZEEETEQ CORPORATION and used only for the specify purpose authorised by ZEEETEQ.						DO NOT SCALE DRAWING	
						SIZE	
						A4	
						SHEET	
						1 of 1	



1

2

3

4

5

6