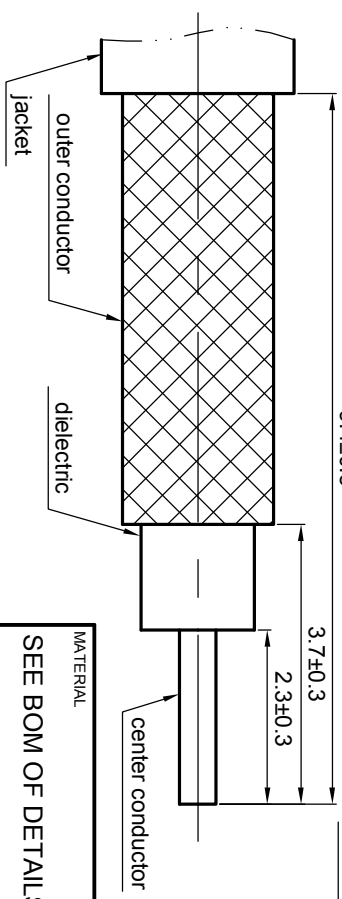
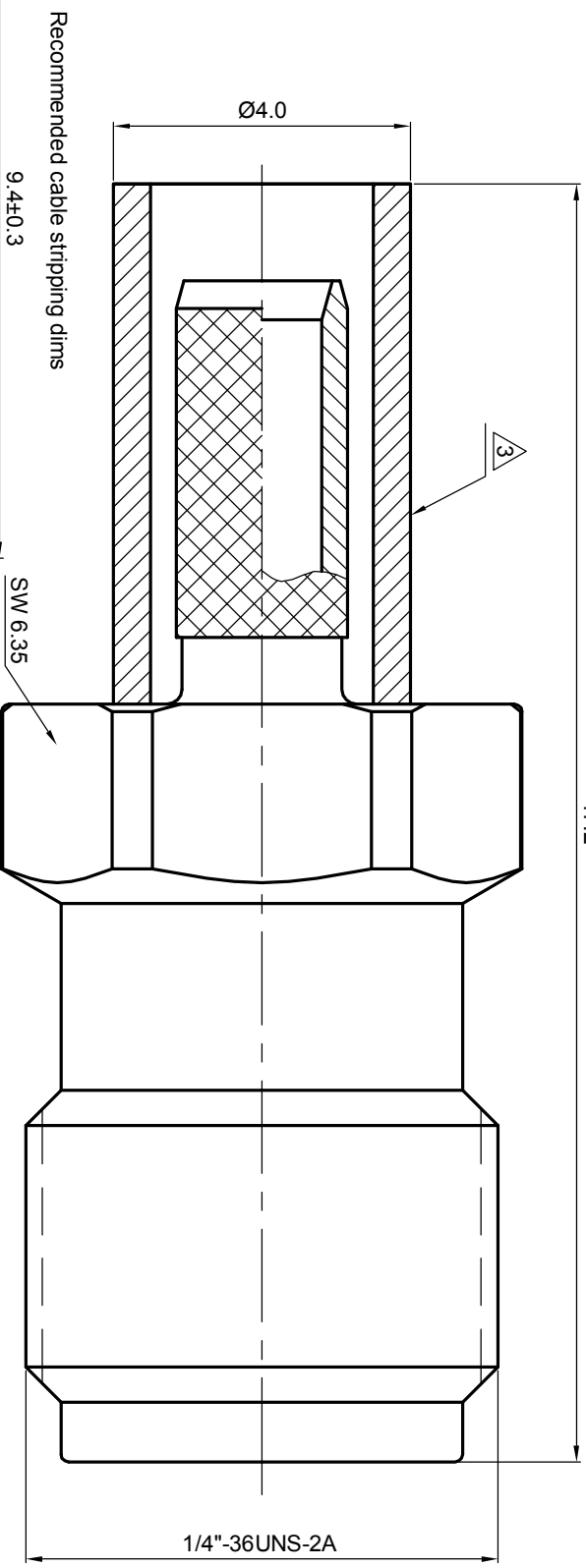


NOTES: (UNLESS OTHERWISE SPECIFIED)

1. Interface comply with IEC 169-15.
 2. Part must be packaged to avoid any damaged during transportation.
- ⚠ After crimping dimension should be A/FSW 3.25.



REV.	DESCRIPTION	APPROVED	DATE	ECN

MATERIAL		TOLERANCES		THIRD ANGLE PROJECTION	
SEE BOM OF DETAILS		Opface X ± 1 1place X ± 0.1 2place .XX ± 0.05 Angle $\pm 5^\circ$		GENERAL ECCENTRICITY <input checked="" type="checkbox"/> 0.06	
FINISH		Remove burrs and sharp edges		NAME: Billy.Lei DATE: 11 Oct 07	
SEE BOM OF DETAILS				CHECKED BY: APPROVED BY:	
Plating part to be touched by gloves		NOTICE: Those drawings and specifications are the property of ZEETEQ CORPORATION and used only for the specify purpose authorised by ZEETEQ.		DRAWN BY: Billy.Lei DATE: 11 Oct 07	
SURFACE		VOLUME		TITLE: SMA, Jack, cable	

DWG NO. 5030.SMA.JSC.06.111		SCALE 10:1		DO NOT SCALE DRAWING		SIZE A4		SHEET 1 of 1	
REV. S1		TITLE SMA, Jack, cable		Zee teq		1.6		REV. S1	