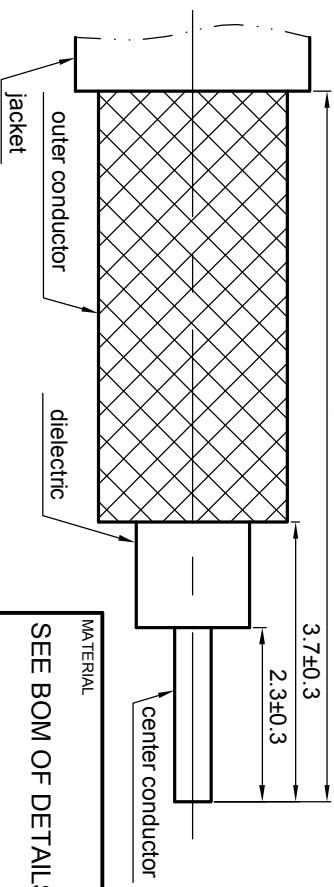
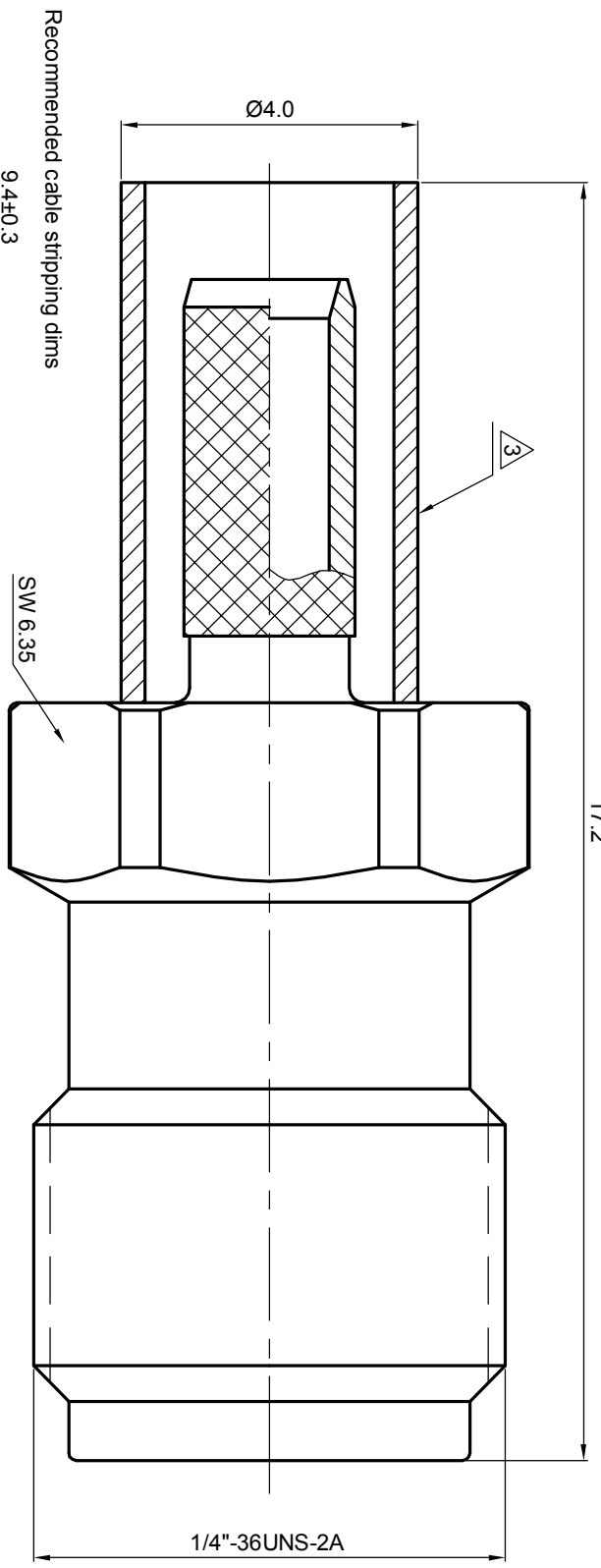


NOTES: (UNLESS OTHERWISE SPECIFIED)

1. Interface comply with IEC 169-15.
 2. Part must be packaged to avoid any damaged during transportation.
- ⚠ After crimping dimension should be A/F/SW 3.25.



REV.	DESCRIPTION	APPROVED	DATE	ECN

MATERIAL		SEE BOM OF DETAILS		TOLERANCES		THIRD ANGLE PROJECTION	
SEE BOM OF DETAILS		SEE BOM OF DETAILS		Opface X ± 1 1place X ± 0.1 2place .XX ± 0.05 Angle $\pm 5^\circ$		GENERAL ECCENTRICITY <input checked="" type="checkbox"/> 0.06	
FINISH		SEE BOM OF DETAILS		Remove burrs and sharp edges 		DRAWN BY: Billy.Lei DATE: 11 Oct 07	
Plating part to be touched by gloves		SEE BOM OF DETAILS		-0.2 		CHECKED BY: APPROVED BY:	
SURFACE		VOLUME		NOTICE: Those drawings and specifications are the property of ZEETEQ CORPORATION and used only for the specify purpose authorised by ZEETEQ.		NAME: DATE:	

				TITLE SMA, Jack, cable	
DWG NO. 5031.SMA.JSC.07.111				REV. S1	
SCALE 10:1		DO NOT SCALE DRAWING		SIZE A4	
SHEET 1 of 1				REV.	

1 2 3 4 5 6