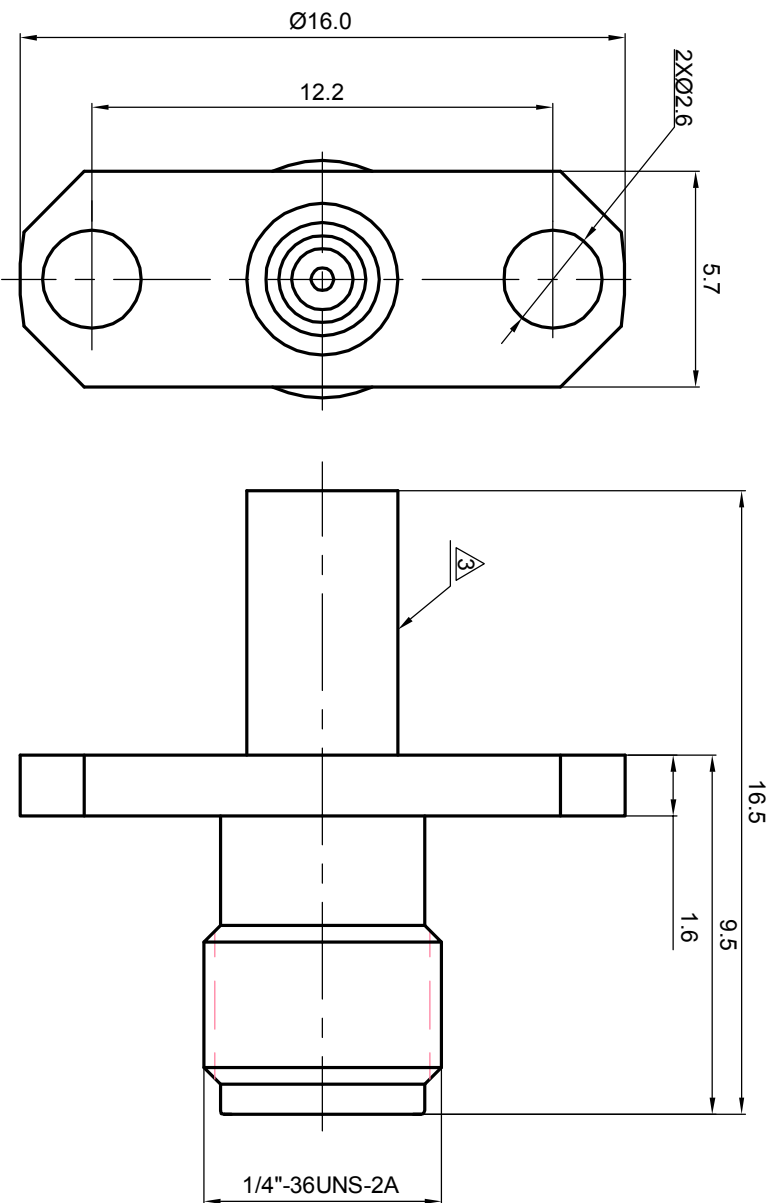
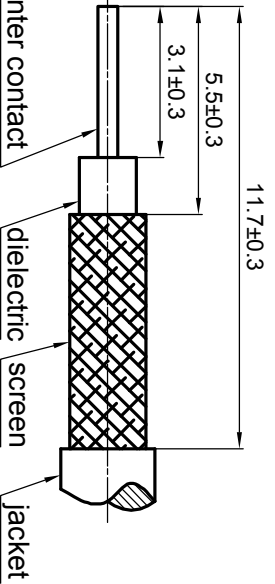


NOTES: (UNLESS OTHERWISE SPECIFIED)

1. Interface comply with IEC 169-15.
 2. Part must be packaged to avoid any damaged during transportation.
- ⚠ After crimping dimension should be AFSW 3.25.



RECOMMENDED CABLE STRIPPING DIMENSIONS



| REV. | DESCRIPTION | APPROVED | DATE | ECN |
|------|-------------|----------|------|-----|
| | | | | |
| | | | | |
| | | | | |

| | | | | | | | | | |
|--------------------------------|--|--------------------------------------|--|--|--|---|--|-----------------------------|--|
| MATERIAL | | SEE BOM OF DETAILS | | TOLERANCES | | THIRD ANGLE PROJECTION | | TITLE | |
| SEE BOM OF DETAILS | | SEE BOM OF DETAILS | | Opface X ± 1 1place X ± 0.1 2place .XX ± 0.05 Angle $\pm 5^\circ$ | | GENERAL ECCENTRICITY <input checked="" type="checkbox"/> 0.06 | | Zee teq SMA, JACK, CABLE | |
| FINISH | | Remove burrs and sharp edges | | -0.2 +0.2 | | DRAWN BY | | DWG NO. | |
| SEE BOM OF DETAILS | | Plating part to be touched by gloves | | APPROVED BY | | NAME | | 5164.SMA.JSC.06.111 | |
| Dimension apply before plating | | XXX - measuring point for plating | | DRAWN BY | | DATE | | REV. | |
| SURFACE | | VOLUME | | CHECKED BY | | DANNY.D20NOV07 | | S1 | |
| SCALE | | DO NOT SCALE DRAWING | | SIZE | | SHEET | | 1 OF 1 | |
| 5:1 | | A4 | | A4 | | 1 OF 1 | | | |

1 2 3 4 5 6