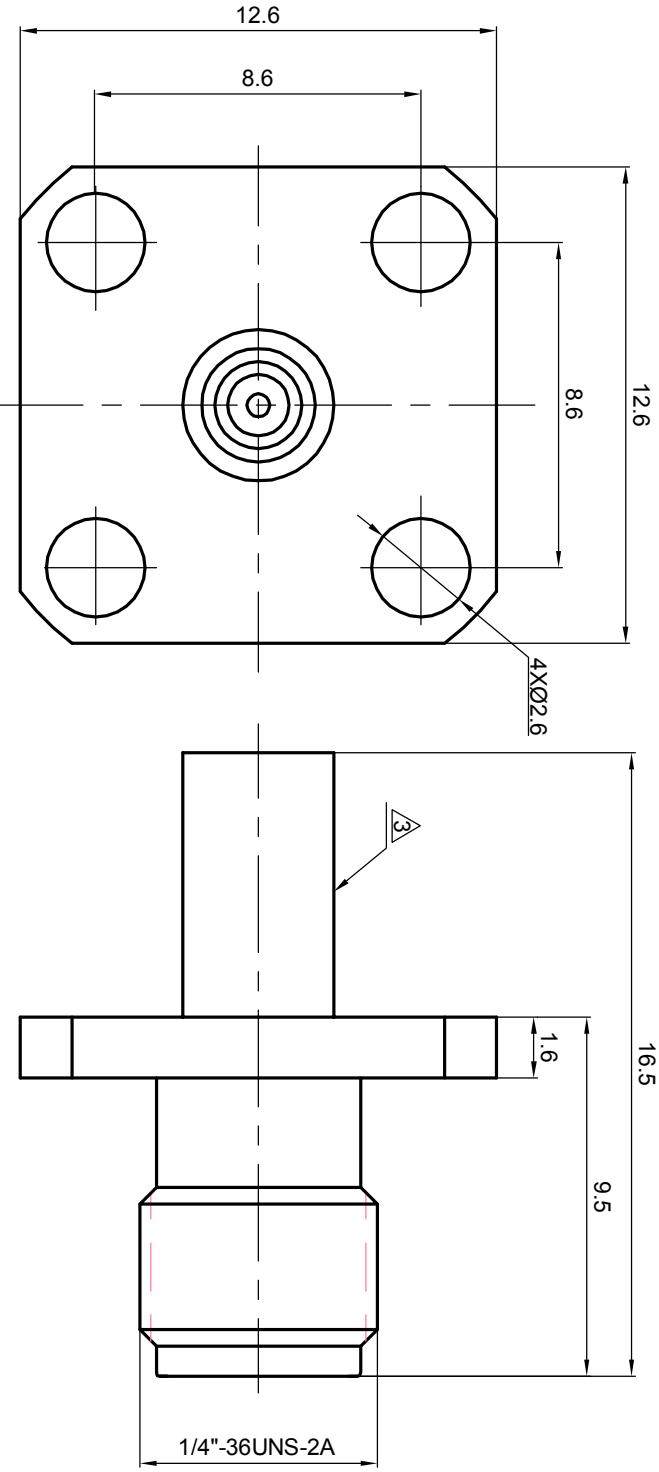


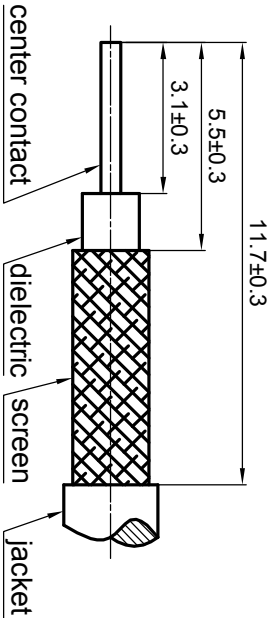
NOTES: (UNLESS OTHERWISE SPECIFIED)

1. Interface comply with IEC 169-15.
2. Part must be packaged to avoid any damaged during transportation.

A After crimping dimension should be AF/SW 3.25.



RECOMMENDED CABLE STRIPPING DIMENSIONS



REV.	DESCRIPTION	APPROVED	DATE	ECN

MATERIAL		SEE BOM OF DETAILS		TOLERANCES		THIRD ANGLE PROJECTION		TITLE	
SEE BOM OF DETAILS		SEE BOM OF DETAILS		Opface X ±1 1place X ±0.1 2place .XX ±0.05 Angle ±5°				Zee-teq SMA, JACK, CABLE	
FINISH		REMOVE BURRS AND SHARP EDGES		-0.2 +0.2		GENERAL ECCENTRICITY 0.06		DWG NO. 5168.SMA.JSC.07.111	
SEE BOM OF DETAILS		Plating part to be touched by gloves Dimension apply before plating XXX - measuring point for plating		NOTICE: Those drawings and specifications are the property of ZEEITEQ CORPORATION and used only for the specify purpose authorised by ZEEITEQ.		DRAWN BY Danny.D20Nov07 CHECKED BY APPROVED BY		REV. S1	
SURFACE		VOLUME		SCALE 5:1		DO NOT SCALE DRAWING		SIZE A4	
								SHEET 1 OF 1	

