

# DATA SHEET

## Cable connector



### Part Number

5027.SMA.JSC.08.111

### Description

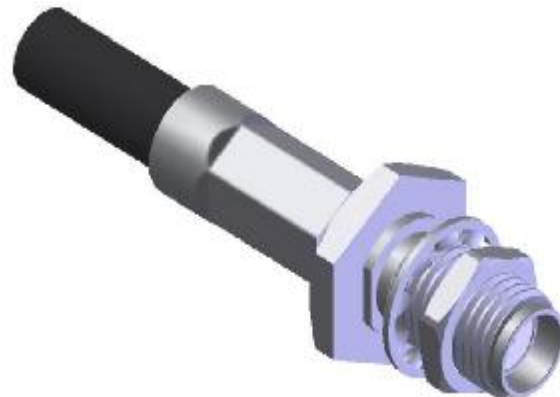
SMA, Jack, Straight, Cable

### Interface Standard

IEC 60169-15

### Suitable Cable

RG58C/U, RG141/U, RG303/U



### Electrical Data

Impedance	50	Ω		
Max. operating frequency	8	GHz	cable limited	
Frequency range	DC to 1GHz	1 to 2.2GHz	2.2 to 3GHz	3 to 6GHz
VSWR	≤1.03	≤1.03	≤1.06	≤1.08
Insertion loss	0.03 $\sqrt{f(\text{GHz})}$	dB		
Insulation resistance	≥5000	MΩ		
Center contact resistance	≤3	mΩ		
Outer contact resistance	≤2.5	mΩ		
Dielectric withstanding voltage	≥1000	Vrms @ 50Hz	cable limited	
Working voltage	≤480	Vrms @ 50Hz	cable limited	

### Mechanical Data

Mating cycles	≥500	
Center contact axial force	≥22	N
Center contact axial torque	≥0.03	Nm
contact gauge ret. Force	≥0.28	N
Center contact	solder	
Outer contact	crimp	
Cable retention force		
RG58C/U	≥128.7	N
RG141/U	≥128.7	N
RG303/U	≥128.7	N

### Environmental Data

Operating temperature	restricted by cable and/or silicone used
2002/95/EC (ROHS)	compliant
Sealing	N/A
Thermal shock	MIL-STD-202 Method107, condition B
Moisture resistance	MIL-STD-202 Method106
Corrosion resistance	MIL-STD-202 Method101, condition B
Vibration	MIL-STD-202 Method204, condition D
Shock	MIL-STD-202 Method213, condition I

### Material Data

Piece Parts	Material	Surface Plating
center contact	Beryllium copper	Au
outer contact	Brass	Au
body	Brass	Au
insulator	PTFE	
Ferrule	Brass	Au
Lock washer	Phosphor bronze	Au

**Zeeteq** the technoledge connecting people

No. 51 Sci.-Tech Industry Park, Huoju  
Road, SND, Suzhou, China  
Zip: 215009

Tel: +86 512 6807 8808  
Fax: +86 512 6807 8818  
[www.zeeteq.com](http://www.zeeteq.com)

Rev.: a  
issued: 2008-6-23  
page: 1 of 1