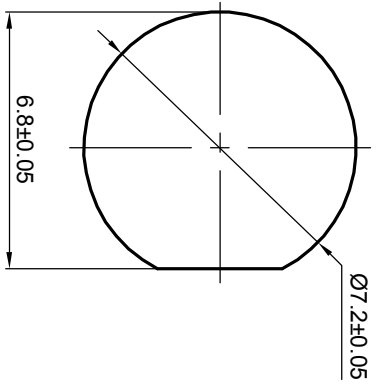


NOTES: (UNLESS OTHERWISE SPECIFIED)

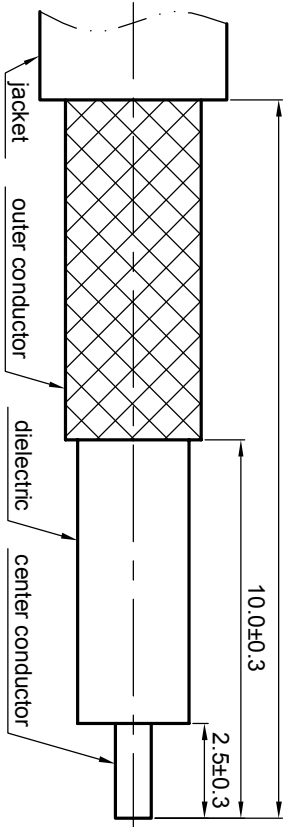
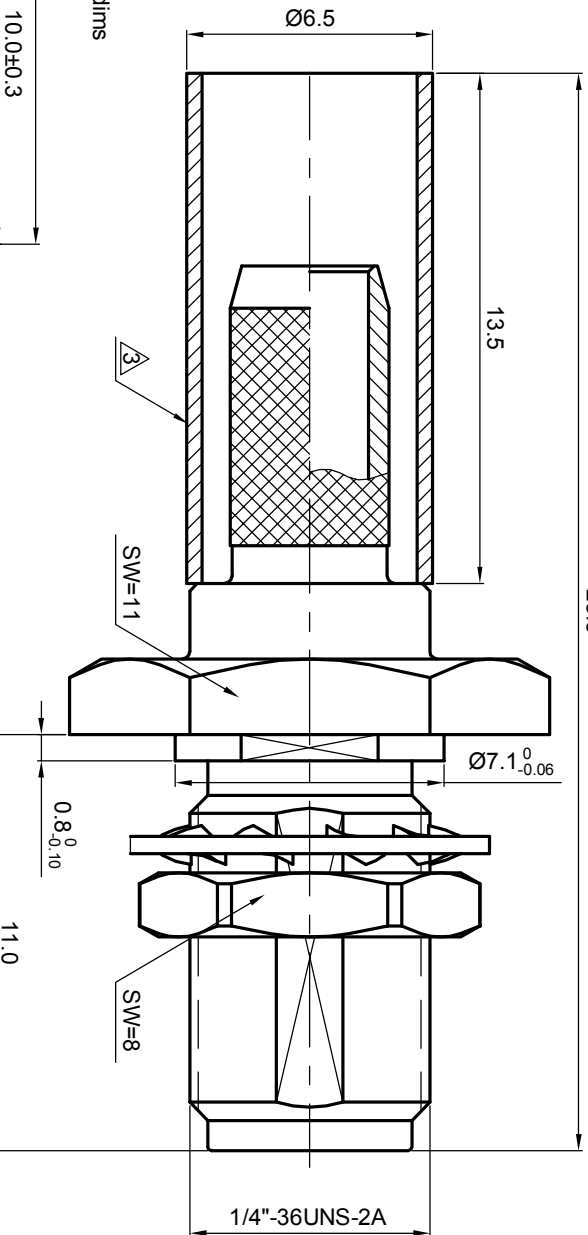
1. Interface comply with IEC 169-15.
2. Part must be packaged to avoid any damaged during transportation.

⚠ After crimping dimension should be AFSW 5.41.
Mounting hole



Recommended cable stripping dirms

19.0±0.3



1.6

REV.	DESCRIPTION	APPROVED	DATE	ECN
A	REL. TO PRODUCTION	Johnny	21 Nov 07	

MATERIAL		SEE BOM OF DETAILS		TOLERANCES		THIRD ANGLE PROJECTION	
SEE BOM OF DETAILS		SEE BOM OF DETAILS		Opface X ±1 1place X ±0.1 2place .XX ±0.05 Angle ±5°		GENERAL ECCENTRICITY <input checked="" type="checkbox"/> 0.06	
FINISH		Remove burrs and sharp edges		-0.2 -0.2		NAME DATE DRAWN BY Billy.Lei 14Oct07 CHECKED BY Joy 21 Nov 07 APPROVED BY Johnny 21 Nov 07	
SURFACE		Plating part to be touched by gloves		NOTICE: Those drawings and specifications are the property of ZEETEQ CORPORATION and used only for the specify purpose authorised by ZEETEQ.		TITLE SMA, Jack, cable	
VOLUME				DWG NO. 5028.SMA.JSC.09.111		SCALE 5:1	

SURFACE		VOLUME		NOTICE: Those drawings and specifications are the property of ZEETEQ CORPORATION and used only for the specify purpose authorised by ZEETEQ.		TITLE SMA, Jack, cable	
VOLUME				NOTICE: Those drawings and specifications are the property of ZEETEQ CORPORATION and used only for the specify purpose authorised by ZEETEQ.		DWG NO. 5028.SMA.JSC.09.111	
SCALE		DO NOT SCALE DRAWING		REV. A		SHEET 1 of 1	