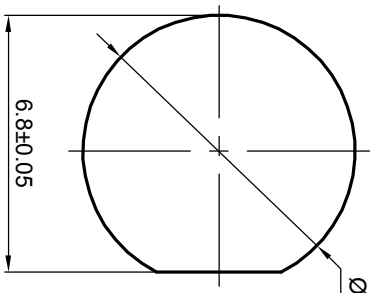
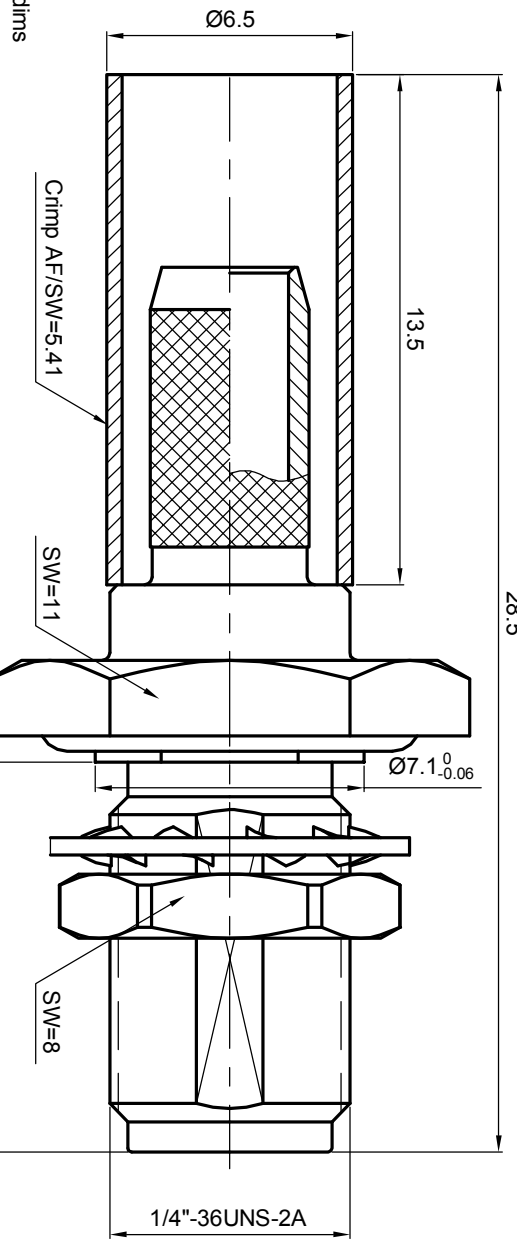


NOTES: (UNLESS OTHERWISE SPECIFIED)

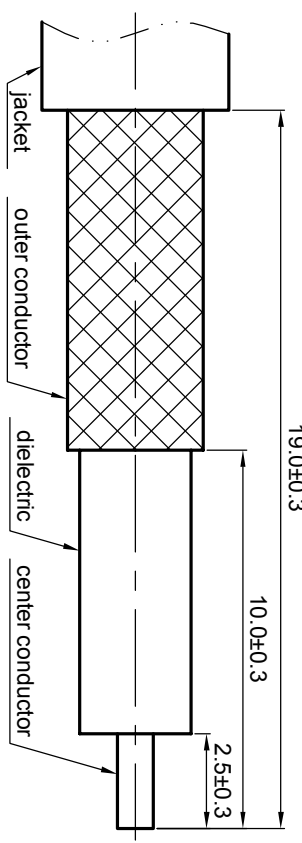
1. Interface comply with IEC 169-15.
2. Part must be packaged to avoid any damaged during transportation.



Mounting hole



Recommended cable stripping dims



MATERIAL	
SEE BOM OF DETAILS	
FINISH	
SEE BOM OF DETAILS	
Plating part to be touched by gloves	
Dimension apply before plating	
XXX - measuring point for plating	
SURFACE	VOLUME

TOLERANCES	
Opplace	X ±1
1place	X ±0.1
2place	XX ±0.05
Angle	±5°
Remove burrs and sharp edges	
	-0.2
	+0.2

THIRD ANGLE PROJECTION	
GENERAL ECCENTRICITY	<input checked="" type="checkbox"/> 0.06
DRAWN BY	NAME DATE
Billy Lei	29 Feb 08
CHECKED BY	
APPROVED BY	

NOTICE: Those drawings and specifications are the property of ZEETEQ CORPORATION and used only for the specify purpose authorised by ZEETEQ

TITLE	
SMA,Jack,cable	
DWG NO.	REV.
5179.SMA.JSC.09.111	S1
SCALE	SIZE
5:1	A4
DO NOT SCALE DRAWING	SHEET
	1 of 1

