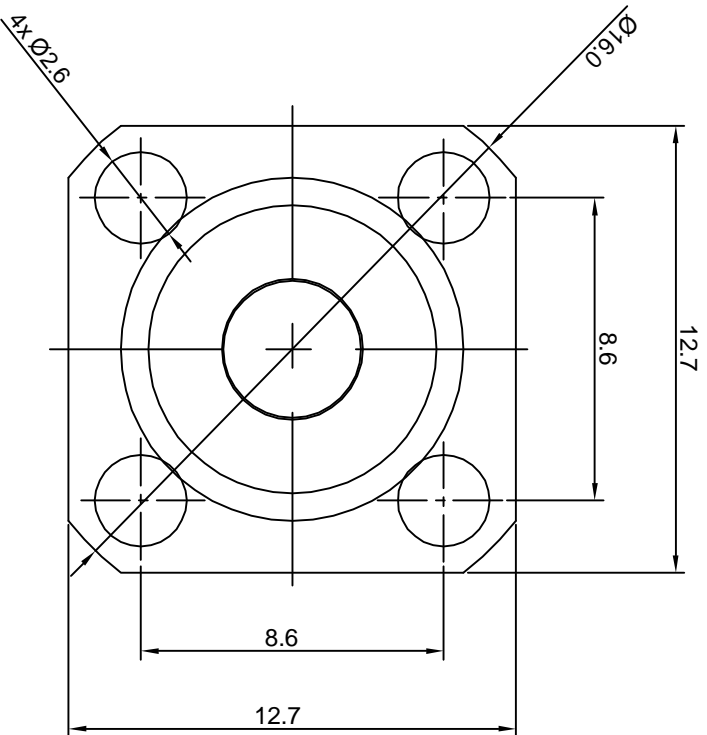
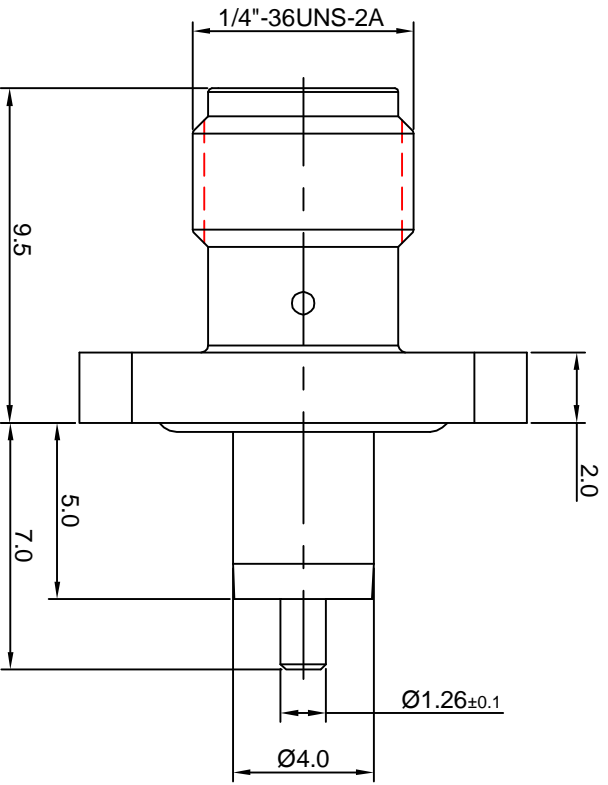


NOTES: (UNLESS OTHERWISE SPECIFIED)

1. INTERFACE COMPLY WITH IEC 169-15.
2. PART MUST BE PACKAGED TO AVOID ANY DAMAGES DURING TRANSPORTATION.



REV.	DESCRIPTION	APPROVED	DATE	ECN

MATERIAL SEE BOM FOR DETAILS		TOLERANCES		THIRD ANGLE PROJECTION		TITLE	
FINISH SEE BOM FOR DETAILS		Optimize X ±1 1place X ±0.1 2place .XX ±0.05 Angle ±5°		GENERAL ECCENTRICITY <input checked="" type="checkbox"/> 0.06		Zee-teq	
Plating part to be touched by gloves		Remove burrs and sharp edges		DRAWN BY Joy Zhou 27JUL07		SMA, JACK, FLANGE	
Dimension apply before plating				CHECKED BY		DWG NO. 6006.SMA.JSF.00.110	
XXX - measuring point for plating				APPROVED BY		REV. S1	
SURFACE		SURFACE		SCALE 5:1		DO NOT SCALE DRAWING	
VOLUME		VOLUME		SIZE A4		SHEET 1 of 1	

NOTICE: Those drawings and specifications are the property of ZEE-TEQ CORPORATION and used only for the specific purpose authorised by ZEE-TEQ

