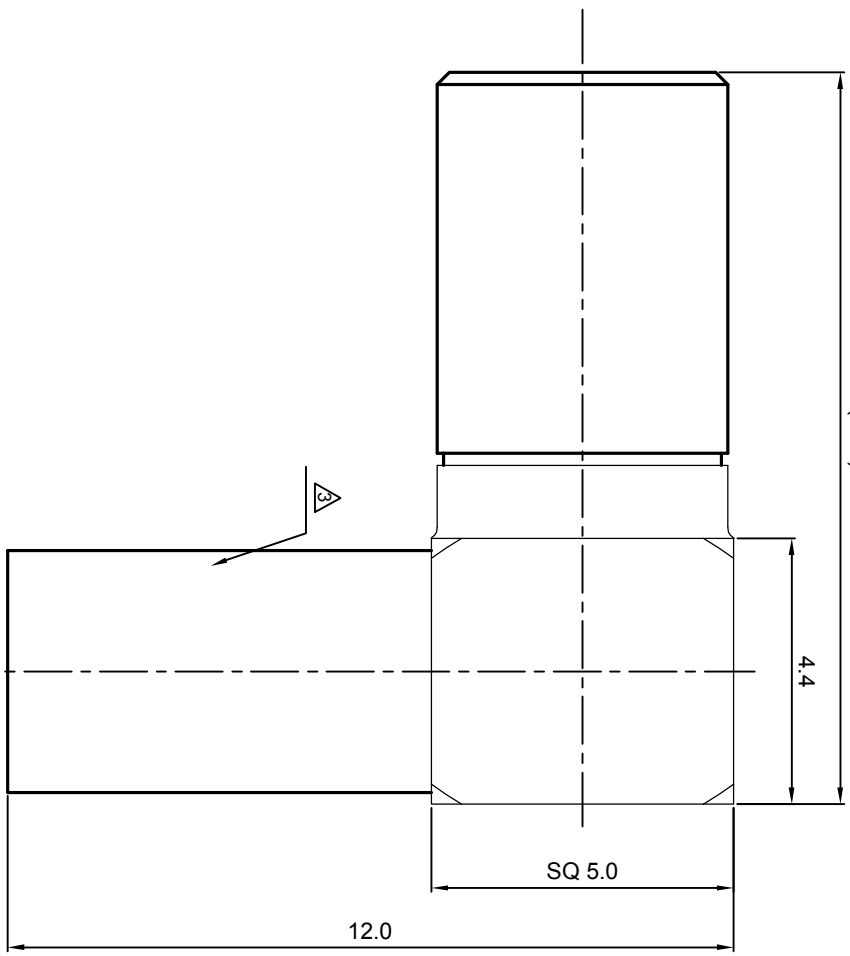


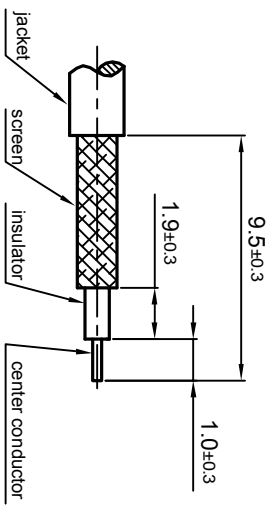
**NOTES: (UNLESS OTHERWISE SPECIFIED)**

1. The interface comply with IEC169-10.
2. Part must be packaged to avoid any damages during transportation.
3. After crimping dimension should be SW3,25

(12.1)



RECOMMENDED CABLE STRIPPING DIMENSIONS



REV.	DESCRIPTION	APPROVED	DATE	EON

MATERIAL <b>SEE BOM FOR DETAILS</b>		TOLERANCES Opface X ±1 1place X ±0.1 2place .XX ±0.05 Angle ±5°		THIRD ANGLE PROJECTION 	
FINISH <b>SEE BOM FOR DETAILS</b>		Remove burrs and sharp edges 		GENERAL ECCENTRICITY <input checked="" type="checkbox"/> 0.06	
Plating part to be touched by gloves		DRAWN BY Collin		NAME Collin	
Dimension apply before plating		CHECKED BY		DATE 08Oct08	
XXX - measuring point for plating		APPROVED BY			
SURFACE		VOLUME			

TITLE <b>SSMB, JACK, CABLE</b>				SCALE 8:1	
DWG NO. <b>5340.SSMB.JRC.06.111</b>				DO NOT SCALE DRAWING	
REV. <b>S1</b>				SIZE A4	
				SHEET 1 of 1	

