

Description

7/16 connectors are designed for use in high power, very low PIM communication system. They feature extremely stable mechanical properties and excellent electrical properties, mostly with waterproof specification. It operate up to 7.5GHz.

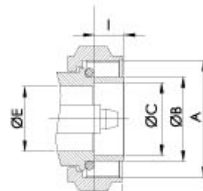
7/16 connectors are suitable for applications in base stations (GSM/UMTS). They guarantee signal transmission with low attenuation and PIM. Zeeteq 7/16 connectors comply with IEC 169-4, the straight and angled connectors for cables and receptacle are available.

Configuration

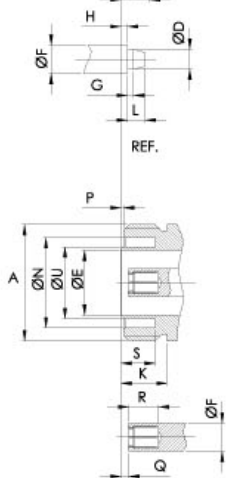
plug straight cable connector.....	104
plug right angle cable connector.....	106
jack straight cable connector.....	107
jack straight bulkhead cable connector..	109
jack straight flange cable connector.....	110
plug receptacle	112
jack receptacle.....	114

Interface Scheme

Plug



Jack



Interface Dimensions

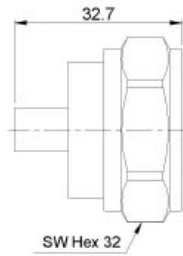
	Plug		Jack		
	min.	max.	min.	max.	
A	M29x1.5		M29x1.5		A
B	20.60	21.40	-	-	B
C	18.03	18.21	-	-	C
D	4.96	5.04	-	-	D
E	15.85	16.25	15.85	16.25	E
F	7.00 nom.		7.00 nom.		F
G	1.40	1.60	-	-	G
H	1.47	1.77	-	-	H
I	7.00	8.00	-	-	I
K	-	-	10.00	-	K
L	-	4.50	-	-	L
M	7.00	9.00	-	-	M
N	-	-	22.10	22.90	N
P	-	-	0.50	0.70	P
Q	-	-	1.77	2.07	Q
R	-	-	5.00	-	R
S	-	-	8.10	-	S
T	-	-	-	18.50	T
U	-	-	17.84	18.00	U

SPECIFICATION

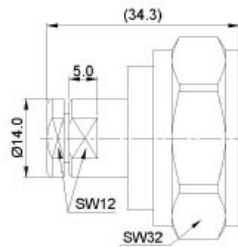
ELECTRICAL DATA	
Impedance	50Ω
Frequency range	DC-7.5GHz
VSWR(typical value)	
-straight, semi-rigid	1.02+0.020f(GHz)
-angle, semi-rigid	1.03+0.030f(GHz)
-straight, flexible	1.03+0.025f(GHz)
-angle, flexible	1.05+0.040f(GHz)
RF leakage @ 1GHz	≥ 128dB
Dielectric withstanding voltage(c sea level, in Vrms,50Hz)	≥ 4000
Working voltage(at sea level, in Vrms,50Hz)	≤ 2700
Insulation resistance	≥ 10000MΩ
Contact resistance	
-center contact	≤ 0.4mΩ
-outer contact	≤ 1.5mΩ
MECHANICAL DATA	
Coupling nut torque	
-recommended	25-30Nm
-proof	35Nm
Coupling nut retention force	≥ 1000N
contact retention force	
-axial	≥ 200N
Durability(matings)	≥ 500
ENVIRONMENTAL DATA	
Temperature range	-65 °C - +165 °C
Climatic category	IEC 55/155/56
Thermal shock	MIL-STD-202,Method 107, Condition B
Moisture resistance	MIL-STD-202,Method 106
Corrosion	MIL-STD-202,Method 101, Condition B
Vibration	MIL-STD-202,Method 204, Condition B
Shock	MIL-STD-202,Method 213, Condition I

MATERIAL DATA		
PART	MATERIAL	PLATING
Body, pin contact	Brass	Silver
Outer contact, socket contact	Spring bronze	Silver
Ferrule	Copper	trimetal
Spring washer	Bronze	Gold, trimetal
Gasket	Silicone rubber	

PLUG STRAIGHT CABLE CONNECTORS

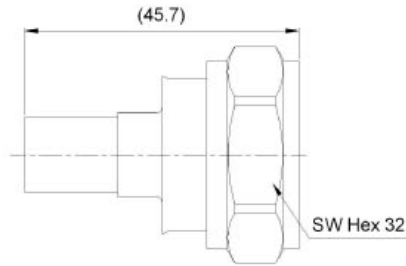


Part number	Cable code	Cable	Center contact	Outer contact	Body plating
5069.716.PSC.04.223	04	UT250 RG401	solder	solder	silver

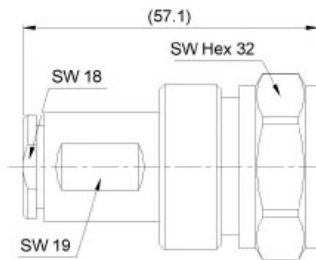


Part number	Cable code	Cable	Center contact	Outer contact	Body plating
5230.716.PSC.04.233	04	UT250 RG401	Plug-in	solder	trimetal

PLUG STRAIGHT CABLE CONNECTORS

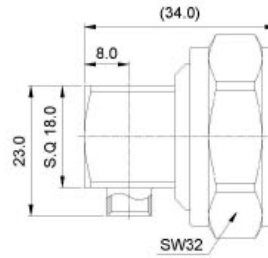


Part number	Cable code	Cable	Center contact	Outer contact	Body plating
5070.716.PSC.11.233	11	RG165 RG213	solder	crimp	trimetal
5071.716.PSC.12.233	12	RG214 RG225 RG393	solder	crimp	trimetal

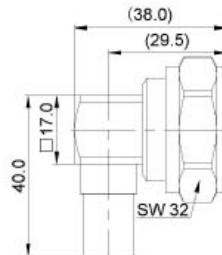


Part number	Cable code	Cable	Center contact	Outer contact	Body plating
5196.716.PSC.11.233	11	RG213	solder	clamp	trimetal
5197.716.PSC.12.233	12	RG214	solder	clamp	trimetal

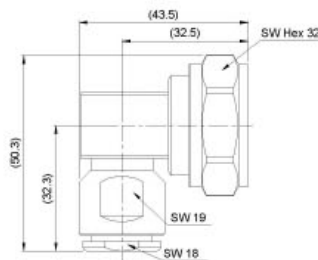
PLUG RIGHT ANGLE CABLE CONNECTORS



Part number	Cable code	Cable	Center contact	Outer contact	Body plating
5072.716.PRC.04.233	04	UT250 RG401	solder	solder	trimetal

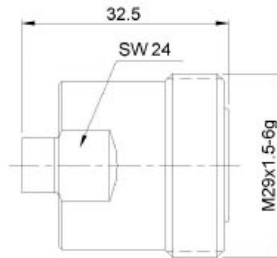


Part number	Cable code	Cable	Center contact	Outer contact	Body plating
5073.716.PRC.11.233	11	RG165 RG213	solder	crimp	trimetal
5074.716.PRC.12.233	12	RG214 RG225 RG393	solder	crimp	trimetal

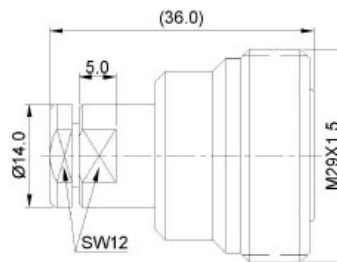


Part number	Cable code	Cable	Center contact	Outer contact	Body plating
5198.716.PRC.11.233	11	RG213	solder	clamp	trimetal
5199.716.PRC.12.233	12	RG214	solder	clamp	trimetal

JACK STRAIGHT CABLE CONNECTORS

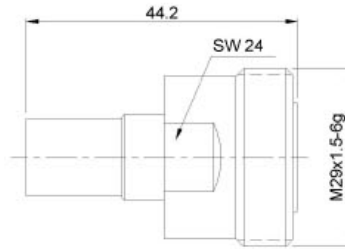


Part number	Cable code	Cable	Center contact	Outer contact	Body plating
5076.716.JSC.04.220	04	UT250 RG401	solder	solder	silver

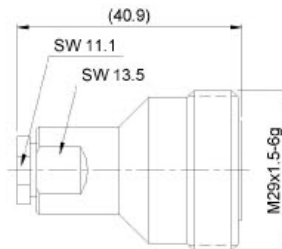


Part number	Cable code	Cable	Center contact	Outer contact	Body plating
5231.716.JSC.04.233	04	UT250 RG401	Plug-in	solder	trimetal

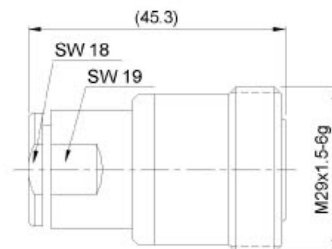
JACK STRAIGHT CABLE CONNECTORS



Part number	Cable code	Cable	Center contact	Outer contact	Body plating
5077.716.JSC.11.233	11	RG165 RG213	solder	crimp	trimetal
5078.716.JSC.12.233	12	RG214 RG225 RG393	solder	crimp	trimetal

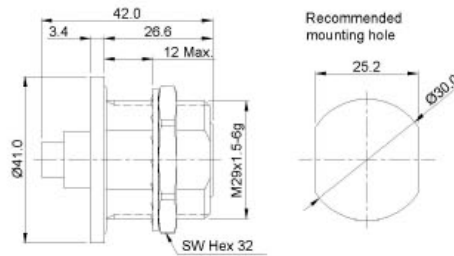


Part number	Cable code	Cable	Center contact	Outer contact	Body plating
5200.716.JSC.09.233	09	RG223	solder	clamp	trimetal

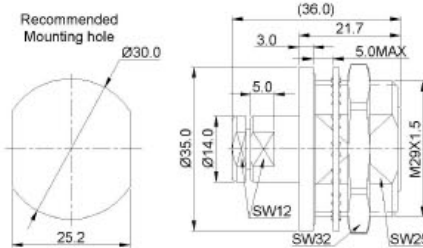


Part number	Cable code	Cable	Center contact	Outer contact	Body plating
5201.716.JSC.11.233	11	RG213	solder	clamp	trimetal
5202.716.JSC.12.233	12	RG214	solder	clamp	trimetal

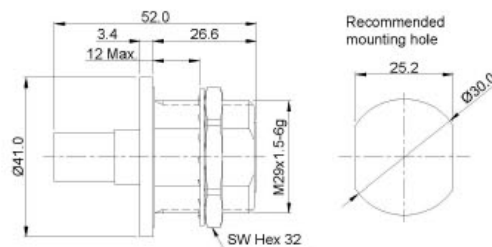
JACK STRAIGHT BULKHEAD CABLE CONNECTORS



Part number	Cable code	Cable	Center contact	Outer contact	Body plating
5079.716.JSC.04.233	04	UT250 RG401	solder	solder	trimetal

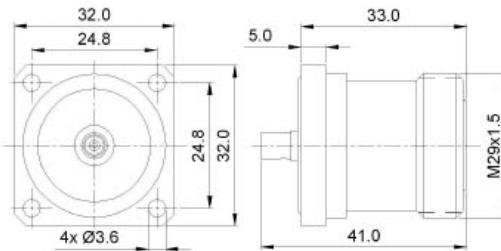


Part number	Cable code	Cable	Center contact	Outer contact	Body plating
5233.716.JSC.04.233	04	UT250 RG401	Plug-in	solder	trimetal

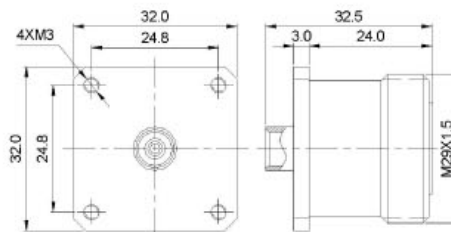


Part number	Cable code	Cable	Center contact	Outer contact	Body plating
5080.716.JSC.11.233	11	RG165 RG213	solder	crimp	trimetal
5081.716.JSC.12.233	12	RG214 RG225 RG393	solder	crimp	trimetal

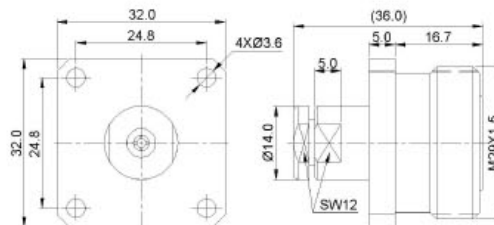
JACK STRAIGHT FLANGE CABLE CONNECTORS



Part number	Cable code	Cable	Center contact	Outer contact	Body plating
5082.716.JSC.03.230	03	UT141 RG402	solder	solder	trimetal

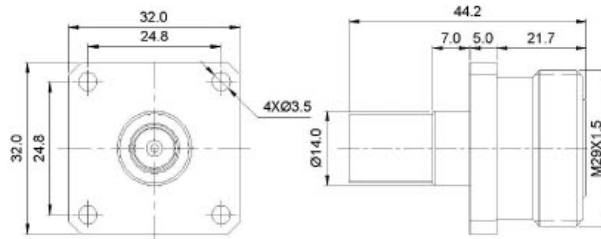


Part number	Cable code	Cable	Center contact	Outer contact	Body plating
5083.716.JSC.04.220	04	UT250 RG401	solder	solder	silver

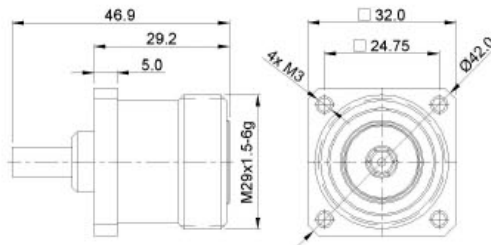


Part number	Cable code	Cable	Center contact	Outer contact	Body plating
5232.716.JSC.04.232	04	UT250 RG401	Plug-in	solder	trimetal

JACK STRAIGHT FLANGE CABLE CONNECTORS

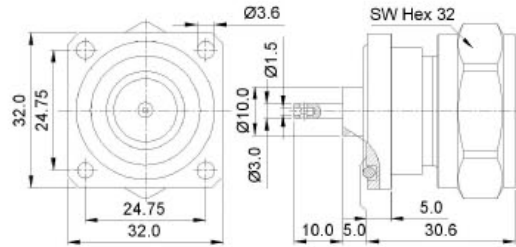


Part number	Cable code	Cable	Center contact	Outer contact	Body plating
5084.716.JSC.11.233	11	RG165 RG213	solder	crimp	trimetal
5085.716.JSC.12.233	12	RG214 RG225 RG393	solder	crimp	trimetal

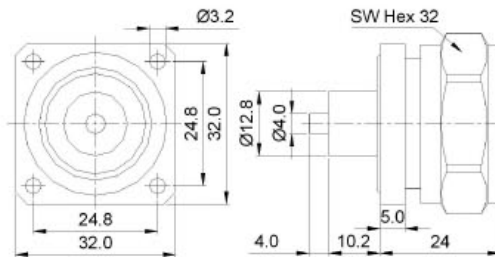


Part number	Cable code	Cable	Center contact	Outer contact	Body plating
5086.716.JSC.09.233	09	RG223	solder	crimp	trimetal

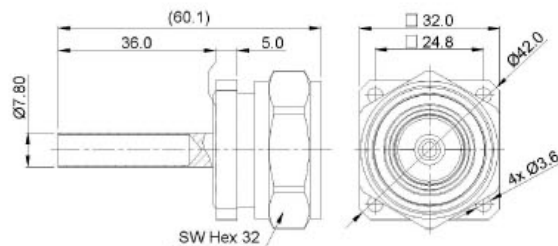
PLUG RECEPTACLES



Part number	Center contact	Body plating	Notes
6113.716.PSF.00.233	solder hole	trimetal	extended dielectric, panel sealing

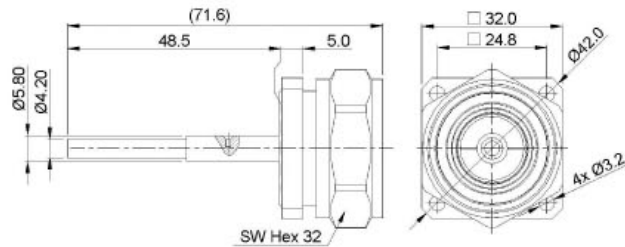
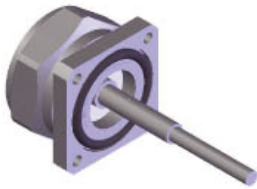


Part number	Center contact	Body plating	Notes
6103.716.PSF.00.233	coaxial rod	trimetal	extended dielectric, panel sealing

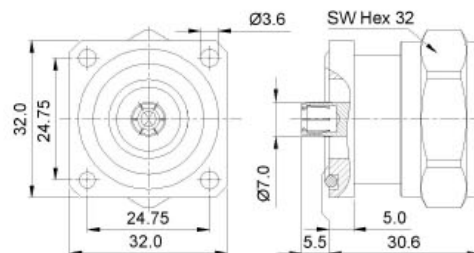


Part number	Center contact	Body plating	Notes
6035.716.PSF.00.233	capacitor hole	trimetal	recessed dielectric, panel sealing

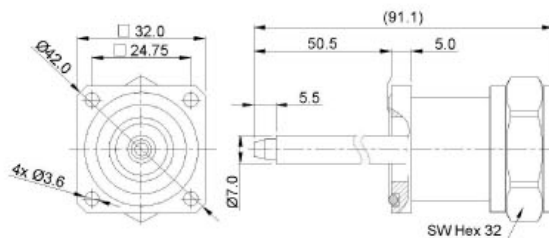
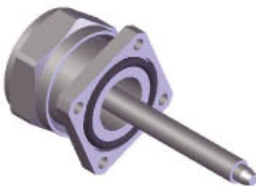
PLUG RECEPTACLES



Part number	Center contact	Body plating	Notes
6038.716.PSF.00.233	capacitor rod	trimetal	recessed dielectric, panel sealing

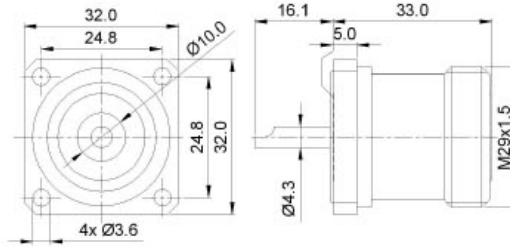


Part number	Center contact	Body plating	Notes
6079.716.PSF.00.233	socket contact	trimetal	recessed dielectric, panel sealing

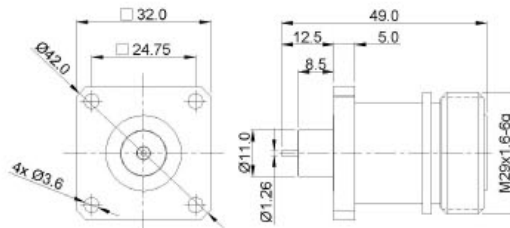


Part number	Center contact	Body plating	Notes
6143.716.PSF.00.233	pin contact	trimetal	recessed dielectric, panel sealing

JACK RECEPTACLES

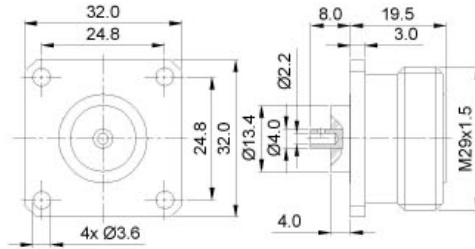


Part number	Center contact	Body plating	Notes
6004.716.JSF.00.230	solder tab	trimetal	recessed dielectric, panel sealing

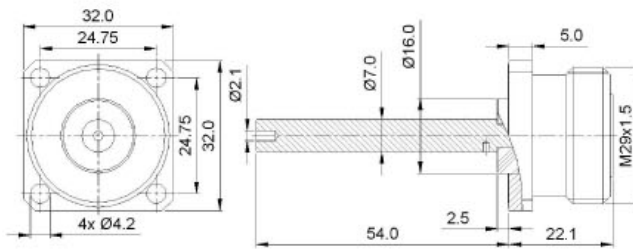


Part number	Center contact	Body plating	Notes
6020.716.JSF.00.230	coaxial rod	trimetal	extended dielectric

JACK RECEPTACLES

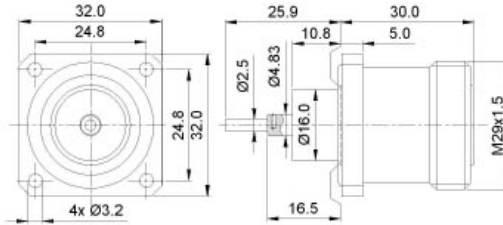


Part number	Center contact	Body plating	Notes
6069.716.JSF.00.230	solder hole	trimetal	extended dielectric

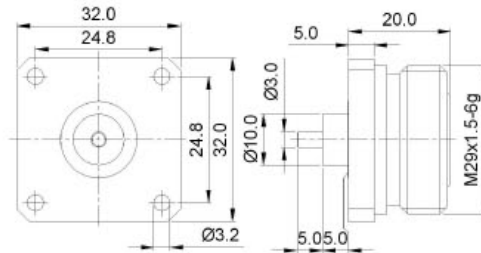


Part number	Center contact	Body plating	Notes
6137.716.JSF.00.220	solder hole	silver	extended dielectric

JACK RECEPTACLES

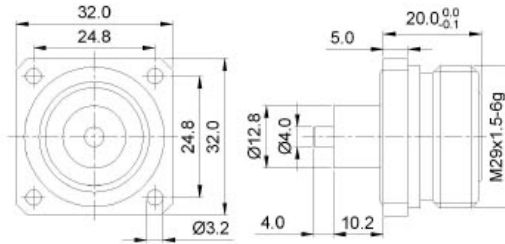


Part number	Center contact	Body plating	Notes
6003.716.JSF.00.230	coaxial rod	trimetal	extended dielectric, panel sealing

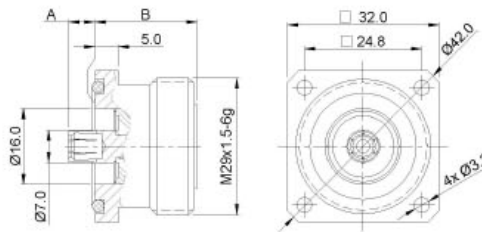


Part number	Center contact	Body plating	Notes
6055.716.JSF.00.230	coaxial rod	trimetal	extended dielectric

JACK RECEPTACLES

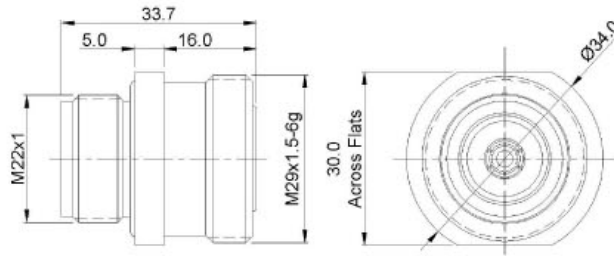


Part number	Center contact	Body plating	Notes
6104.716.JSF.00.230	coaxial rod	trimetal	extended dielectric, panel sealing

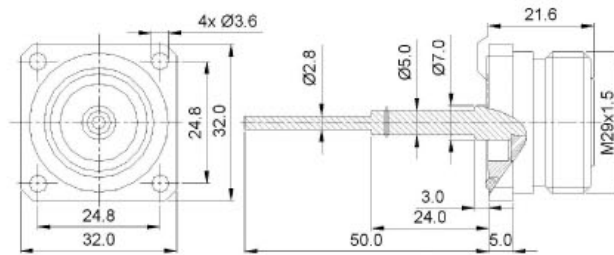


Part number	Center contact	A	B	Body plating	Notes
6076.716.JSF.00.230	socket contact	5.5	21.6	trimetal	panel sealing
6081.716.JSF.00.230	socket contact	5	33.1	trimetal	panel sealing

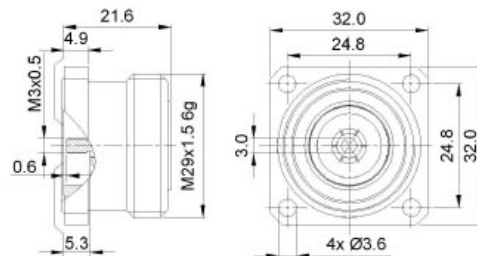
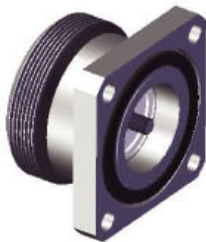
JACK RECEPTACLES



Part number	Center contact	Body plating	Notes
6078.716.JSB.00.230	socket contact	trimetal	threaded mount, panel sealing

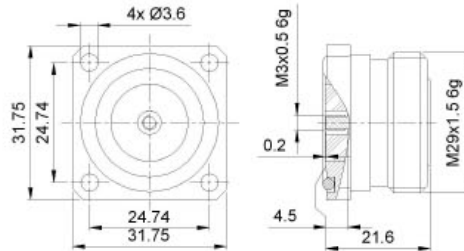
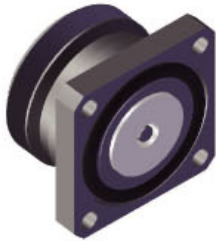


Part number	Center contact	Body plating	Notes
6094.716.JSF.00.230	coaxial rod	trimetal	recessed dielectric, panel sealing

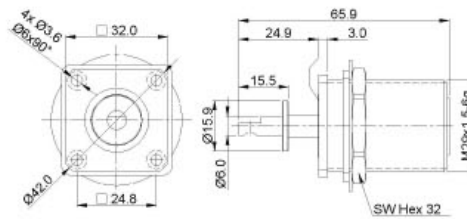


Part number	Center contact	Body plating	Notes
6072.716.JSF.00.220	threaded contact	silver	recessed dielectric, panel sealing

JACK RECEPTACLES



Part number	Center contact	Body plating	Notes
6112.716.JSF.00.220	threaded contact	silver	flush dielectric, panel sealing



Part number	Center contact	Body plating	Notes
6077.716.JSF.00.233	threaded contact	trimetal	recessed dielectric